

*Simmental & SimAngus™*

**JEWELS**

*of the*



**NORTHLAND**



*Saturday, December 2, 2017*

Sale starts promptly at 12:00 Noon  
Hilbrands Cattle Company Sale Facility  
Clara City, Minnesota



**Join us at our 8th Annual  
Jewels of the Northland  
Sale on December 2  
in Clara City, Minnesota!**

*Kinslee Hope  
- Show barn  
manager for  
Hilbrands  
Cattle Co!*



**Hilbrands Cattle Company**

11020 10th St NE, Clara City, MN 56222

Mark 320-894-5953

Amanda 507-828-7089

Herdsmen: Austin White 320-287-2649



**Hilbrands  
Simmentals**

Holloway, MN

Matt

320-760-3346

Adrienne

320-760-3342



**Hecksel Simmental Farm**

18250 County Road 20, Mayer, MN 55360

Ryan & Marlow Hecksel 952-955-1580

or 952-201-8662

*Welcome!*

It is a great time to be diversified in production agriculture- both challenges and tremendous opportunity are here before us. Ownership of proven genetics will assure you success now and in the future. Take advantage of a sale offering like this and capitalize! There are stellar show heifer prospects, proven & future donors as well as elite embryos to make an impact on the industry. The cow families run deep in this sale and the predictability bred into these cattle is not something you see at every sale. The cattle will work and look awesome doing it. Juniors- the AJSA National Classic will be right here in our home state of Minnesota and rest assured that the breeders in this sale will be there to help you every step of the way! This is the place to find your next champion and profit making production machine.

We simply love the success of the Jewels customers in the show ring and then how the cattle are making history in production and still can boast of some on the breed's best EPD profiles. "Opening the gates" for you has always been a mission for this group of breeders and once again not only have they "opened the gates" with great cattle, but have "opened the tanks". They are selling top embryos that are mates to the cattle in this sale and in their herds, many are IVF sexed embryos. What an opportunity to bring your tank and go home with breed leading genetics or they will ship them to your door.

The cattle will be available for viewing any time you are in the area & all day on Friday and the barn social will be at 5 pm. The warm sale facility provides a great atmosphere to catch up with fellow breeders and talk cattle. The sale cattle will be on display at 8 am on sale day and the complimentary lunch begins at 11 am. This is again a video sale and the offering will be presented on the big screens. You can walk outside to view them in person, then come inside and relax while checking out their videos. Those videos will also be available prior to the sale; we invite you to check them out on the sale page at [ebersale.com](http://ebersale.com). If you are unable to join us, live bidding and broadcast is again available from our friends at [liveauctions.tv](http://liveauctions.tv). Trucking will be available to be able to put wheels under your purchase to assure a safe and speedy trip to you.

The marketing team is a great resource to assist you in your purchases. Feel free to call the breeders, Val, or any of the marketing representatives. We look forward to seeing you in Clara City, MN on December 2nd!

Sincerely,  
*Eberspacher Enterprises Inc.*





Show Heifer Prospects • Bred Heifers & Donors • Herd Bull Prospects • Embryos

**Saturday, December 2nd • 12:00 pm Sharp!**

**Hilbrands Cattle Co. Sale Facility • 11020 10th St. NE • Clara City, MN**

**SCHEDULE:**

**Friday, December 1st, 2017**

All day viewing of sale cattle & 5 pm Pre-Sale Social at the Sale Site - Everyone Welcome!

**Saturday, December 2nd, 2017**

8 am: Viewing of sale cattle

11:00 am: Complimentary Lunch

Sale starts at 12 Noon Sharp! Join us for the 8th Annual Jewels of the Northland Sale

**SALE DAY PHONES: Mark 320-894-5953 • Amanda 507-828-7089**

**Matt 320-760-3346 • Adrienne 320-760-3342 • Ryan 952-201-8662**

**Val 612-805-7405 • Darin 970-481-1144**



**Directions from Clara City to Sale Site**

Take County Rd 2 north 5 miles. Turn east on 10th ST NE and go 1/4 mile. Sale facility on south side of road.

**Sale Headquarters**

**Best Western Plus of Willmar** (Green Mill Restaurant & Bar attached)

2100 East Highway 12 E, Willmar, MN • 320-235-6060

**Other Area Motels**

**Holiday Inn of Willmar**

2100 East Highway 12 E, Willmar, MN • 320-231-2601

**Country Inn & Suites**

201 28th Avenue SE, Willmar, MN • 800-596-2375

Includes a water slide - bring your families!

**Prairie's Edge Casino & Resort**

5616 Prairie's Edge Lane, Granite Falls, MN, 320-564-2121

**AmericInn of Willmar**

2402 East Hwy 12, Willmar, MN • 800-634-3444

**Granite Falls Super Motel**

845 Hwy 212 W, Granite Falls, MN • 320-564-4075

**Airports**

**Joe Foss Field:** Sioux Falls, SD (113 miles from sale site)

Serviced by United, Delta & Northwest Airlines (evening flights available)

**Mpls./St. Paul International:** (138 miles from sale site)

Serviced by all major airlines

**Willmar Municipal Airport:** (20 miles from sale site)

John L Rice Field for small planes

**Auctioneer** Col. Jered Shipman 806-983-7226

**Marketing Representatives**

Val Eberspacher, EE Sales ..... 612-805-7405

Derek Vogt, EE Sales ..... 308-750-5216

Kelly Schmidt ..... 406-599-2395

Tom Rooney, Lee Agri-Media ..... 515-491-6025

Joel Edge ..... 319-540-1731

Mitch Armitage ..... 405-641-9438

Scott Forman ..... 405-780-3749

Jeff Paulsen ..... 563-212-9944

Todd Alford ..... 706-207-9454

Doug Parke ..... 859-421-6100

**Updates & Sale Order** Additional information

and sale order can be found on the Eberspacher

Enterprises Inc. Facebook page or download the

EE smart phone APP.



**Announcements** Announcements made sale day and from the auction block during the sale take precedence over printed materials associated with this sale. Anyone attending this sale attends at their own risk. Breeders and sale force will not be held responsible for any personal injury for attending this sale. Sexed heifer semen: no guarantee for 100% heifer calf.

**Terms & Conditions** All cattle sell under the terms and conditions of the American Simmental Association. Terms available sale day. Checks payable to Eberspacher Ent. Guaranteeing one 60 day pregnancy if work is done by a certified embryologist and 60 day ultrasound paperwork is provided.

**JEWELS**  
of the  
**NORTHLAND**

**EPDs** The EPDs listed are Fall 2017 numbers. Please note that EPDs may change from the time the sale catalog is printed until registration papers are transferred.

**Trucking**

Sales management & breeders will assist buyers in coordinating the most economical trucking possible.

Nick Going ..... 765-586-6541

Sam Haroun ..... 319-325-9389

**Videos** Find videos of sale offering online at You Tube (search Jewels of the Northland), [www.ebersale.com](http://www.ebersale.com) or individual breeders websites.

**Insurance**

Insurance available through sale management and Jame Secondino, American Livestock Insurance, 765-832-2697

**Online Bidding**

Real-time bidding is available via the internet for this sale. Live audio and live video will allow buyers to bid on animals just as if they were present at the sale. Bidders must visit [www.LiveAuctions.tv](http://www.LiveAuctions.tv) to create an account and request a buyer number. Instructions are available to walk you through the account setup process. For more information, call Brad Fahrmeier at 816-392-9241 or [brad@LiveAuctions.tv](mailto:brad@LiveAuctions.tv) or Amanda Eberspacher Hilbrands 507-828-7089.

**LiveAuctions TV**

Professional Sale Management:

**Eberspacher**  
ENTERPRISES INC.

Val and Lori Eberspacher, Sale Managers  
Office 507-532-6694 • Cell 612-805-7405  
[sales@ebersale.com](mailto:sales@ebersale.com) • [www.ebersale.com](http://www.ebersale.com)  
Download the EE smart phone APP!

**Hilbrands**  
Cattle Company

320-894-5953  
507-828-7089

Mark & Amanda Hilbrands  
Clara City, Minnesota  
Herdsmen: Austin White 320-287-2649

**Hecksel**  
Simmental  
Farm

Mayer, MN  
952-955-1580 • 952-201-8662

**HILBRANDS**  
Simmentals

320-394-2118 • 320-760-3346  
Holloway, MN

**Guest Partners:**

Sherwood Cattle Co 507-220-3545  
Elm Mound Farms 970-481-1144  
Anderson Cattle Co 320-368-3114  
Rocky Knoll Cattle Co 605-870-3092  
Boehland Cattle Co.



# CONGRATULATIONS TO ALL OUR WINNERS!



**2017 NWSS Reserve Champion Purebred Pen of 3 Heifers**



**2017 NWSS Champion Percentage Pen of 3 Heifers**



**Hilbrands Cattle Company**  
2016 NAILE Premier Exhibitor



**2017 NWSS Reserve Champion Percentage Pen of 3 Bulls**



**HILB Stop & Wish**  
2017 NWSS Reserve Percentage Female Junior Show. Congrats Claire Trennephol!



**HILB Stare & Believe**  
2016 NAILE Division 1 Champion & 2017 NWSS Division 1 Champion  
Congrats Prospect Cattle Co!



**HILB Order of Grace E301**  
2017 American Royal Reserve Grand Champion Purebred Spring Heifer Calf

**JUNIORS - FIND YOUR NEXT CHAMPION ON DECEMBER 2ND IN CLARA CITY, MN!**



**HILB/SHER Data Breach**  
2017 American Royal Reserve Grand Champion Purebred Bull



**HILB Elaina E421**  
2017 American Royal Reserve Grand Spring Heifer Calf Division



**HILB Reason 2 Hope**  
Congrats Brennir Peterson on Reserve Purebred Cow Calf Pair 2017 North Central Regional Classic

***We are extremely proud of these winning genetics!***





**Hilbrands Cattle Company**  
2017 American Royal Premier Breeder & Premier Exhibitor



**TSW Blissful Sight D28**

Grand Champion Bred & Owned Percentage Simmental Heifer at the 2017 AJSA National Classic & the 2017 AJSA Eastern Regional; Supreme Champion Heifer & Grand Champion Simmental 2017 West Virginia State Fair; 3rd Overall 2017 Breeders Sweepstakes. Shown by Thomas Willis. Daughter of HS/DSS Blissful Kisses.



**HILB/SHER Stop & Invision**

Many time winner for Katie Moller



**RTL Glorys Dream Girl**

2017 Reserve Percentage Female MN Beef Expo. Daughter of HILB/SHER Glory Road. Congrats Lorezel Family!



**HSF/Learns Bree C510**

Reserve Champion Cow Calf for Rockin H Simmentals.

**HS Neon Darling D97U**

Reserve Champion Simmental 2017 MN State Fair FFA Show; Grand Champion Simmental 2017 Jackrabbit Memorial Show & March Madness Preview Show. Shown by Maggie Post.



**BWL Gem Stone 64E**

Reserve Division Winner 2017 Iowa State Fair. Owned & shown by B&L Cattle Co, NE. Daughter of HS Sweet Gem X141N.



**HILB/SHER Undeniable Grace**

2017 MN State Fair Champion Percentage Female



**HILB Poseidon D806**

Grand Champion Percentage Bull 2017 MN State Fair



**HPW Sheer Elegance**

Reserve Division Winner. Owned & Shown by Parker Wicker, IN. Daughter of HS Sweet Elegance A5243



**HS Hot Domino D243A**

Grand Champion Simmental Bull 2017 MN State Fair. Shown by Hilbrands Simmental.



**HSF Libby 336**

Champion Percentage Cow Calf Open Show MN State Fair & Reserve Cow Calf 4-H MN State Fair for Mason Latzke.



**JSS Daisy D617**

Champion Purebred Simmental 2017 MN Beef Expo for Trinity Lindner. Daughter of Learns HSF Cameo C203



# Stella Family



## HS/HSF Stella Y5243

**Black Dbl. Polled Purebred** ~ ASA#2596855  
BD: 3/5/11 ~ Tattoo: Y5243 ~ Adj. BW: 81 ET

EPDs	CE	BW	WW	YW	ADG	MCE	Milk	MWW	Stay	DOC	CW	YG	Marb	BF	REA	API	TI
	12	.7	50	65	.10	0	14	38	14	3.3	9.7	-.34	.06	-.039	.75	121	60



**SVF Steel Force S701** **CNS Dream On L186**  
**SVF Sheza Beauty L901**  
**HSF Victoria P30** **Nichols Blk Destiny D12**  
**BTS 91X Big Sky F632**

Stella has been the most consistent donor we have ever worked with. It doesn't matter what bull we mate her to, her calves are always the same, stout, big boned, deep flanked, full ribbed, easy keeping and easy to sell. Year after year, her daughters are some of the top sellers averaging just over \$6000/hd and easily sort themselves to the top of the pack. Take a look at this year's set! It's hard to let a donor with that much consistency go but she's banked up a pretty good embryo inventory for us averaging 10 freezable embryos per flush on 11 IVF reverse sorted flushes, 18 per flush on just her last 3 right before we bred her back. Speaking of breeding, she sells bred up early to one of the hottest bulls in the breed right now, W/C Relentless. I really like what I've been seeing in the Relentless calves thus far and think this could be one of her coolest matings yet! This past summer, Thomas Willis campaigned a granddaughter of Stella's claiming such honors as, Grand Champion Bred & Owned at the 2017 Junior Nationals, 3rd overall at the 2017 Breeder's Sweepstakes, Supreme Champion Female at the 2017 West Virginia State Fair and Reserve Champion at the 2017 Eastern Regionals. Here's a chance to bring home an extremely productive donor that's got all of the groundwork done for you!

A.I. Sire: W/C Relentless 32C on 6/20/17 • Due: 3/29/18  
Est. Plan Mating EPDs: 11 1.1 55 73 .12 4 15 42 10 7.3  
Carcass: 14.7 -.38 .18 -.04 .90 121 65



2017 Jr. National Grand Champion Bred & Owned, Thomas Willis • Granddaughter of Stella



W/C Loaded Up 1119Y  
Embryo Sire



HILB Oracle C033R  
Embryo Sire



Bushs Unbelievable 423  
Embryo Sire



### Selling 3 Non-Sexed IVF Embryos W/C Loaded Up 1119Y x HS/HSF Stella Y5243

Est. PM EPDs: 10 .25 54 71 .11 5 13 40 12 7.15  
Carcass: 12.4 -.44 -.03 -.06 .92 114 61

Guaranteeing 1 60 day pregnancy if work is performed by a certified embryologist and 60 day ultrasound paperwork is provided.



### Selling 3 IVF Sexed Heifer Embryos HILB Oracle C033R x HS/HSF Stella Y5243

Est. PM EPDs: 10 1.45 57 78 .13 3 19 48 10 8.25  
Carcass: 18.0 -.38 .06 -.07 .76 114 64

Guaranteeing 1 60 day pregnancy if work is performed by a certified embryologist and 60 day ultrasound paperwork is provided.



### Selling 3 IVF Sexed Heifer Embryos Bushs Unbelievable 423 x HS/HSF Stella Y5243

Est. PM EPDs: 14 -.7 53 80 .17 5 20 46 11 6.1  
Carcass: 16.85 -.29 .39 -.05 .62 134 68

Guaranteeing 1 60 day pregnancy if work is performed by a certified embryologist and 60 day ultrasound paperwork is provided.



**HS Dyna Girl D769**

Black Dbl. Polled Purebred ~ ASA#3303389

BD: 4/4/16 ~ Tattoo: D769 ~ Adj. BW: 80 ET

EPDs	CE	BW	WW	YW	ADG	MCE	Milk	MWW	Stay	DOC	CW	YG	Marb	BF	REA	API	TI
	14	-1.3	57	84	.17	5	18	46	10	6.8	18.1	-.35	.20	-.030	.94	132	71

A.I. Sire: Welshs Dew It Right 067T on 5/2/17 • Heifer

Est. Plan Mating EPDs: 15 -.6 59 81 .14 8 15 45 12 10.65

Carcass: 17.05 -.38 .19 -.04 .91 135 71

The mating of EO to Stella has been phenomenal to say the least and I think you'll agree when you take look at these two. Though a year apart in age, they are made so much alike, extremely soft bodied, big ribbed, big topped, big hiped and exceptionally well balanced from end to end. If you are in to the numbers game, these two have an API in the top 30% of the breed! **Hilbrands Simmentals reserves the right to one (1) flush, with a minimum of six (6) freezable embryos at the seller's expense and the buyer's convenience on Lots 2 and 3.**

Welshs Dew It Right  
067T, A.I. Sire**HS Esmeralda E28C**

Black Dbl. Polled Purebred ~ ASA#3299001

BD: 3/20/17 ~ Tattoo: E28C ~ Adj. BW: 65 ET

EPDs	CE	BW	WW	YW	ADG	MCE	Milk	MWW	Stay	DOC	CW	YG	Marb	BF	REA	API	TI
	14	-1.3	57	84	.17	5	18	46	10	6.8	18.1	-.35	.20	-.030	.94	132	71

Pedigree for Lots 2 &amp; 3:

W/C Executive Order 8543B

W/C United 956Y

Miss Werning KP 8543U

HS/HSF Stella Y5243

SVF Steel Force S701

HSF Victoria P30

View sale live and bid online at:

**LiveAuctions.TV**

3





## HS Daffodil D705

**Red Baldy Dbl. Polled Purebred** ~ ASA#3307338  
BD: 3/28/16 ~ Tattoo: D705 ~ Adj. BW: 87 ET

EPDs  
CE 9 BW 2.5 WW 69 YW 98 ADG .19 MCE 3 Milk 15 MWW 50 Stay 11 DOC 6.8

CW 31.7 YG -.25 Marb -.01 BF -.043 REA .70 API 113 TI 67

A.I. Sire: W/C Executive Order 8543B on 4/18/17 • Due: 1/25/18  
Est. Plan Mating EPDs: 12 -.4 66 101 .22 6 19 52 9 8.55  
Carcass: 29.15 -.31 .17 -.03 .92 128 75



4



W/C Executive Order 8543B,  
A.I. Sire



5



## HS Daphne D45Z

**Black Dbl. Polled Purebred** ~ ASA#3307339  
BD: 3/9/16 ~ Tattoo: D45Z ~ Adj. BW: 78 ET

**R&R Chamberlain X744**

**JF Rancher 222Z**

**JF Ebony's Joy 734T**

**SVF Steel Force S701**

**HS/HSF Stella Y5243**

**HSF Victoria P30**



## HS Daisy D933

**Red Baldy Dbl. Polled Purebred** ~ ASA#3303388  
BD: 3/25/16 ~ Tattoo: D933 ~ Adj. BW: 91 ET

EPDs  
CE 9 BW 2.5 WW 69 YW 98 ADG .19 MCE 3 Milk 15 MWW 50 Stay 11 DOC 6.8

CW 31.7 YG -.25 Marb -.01 BF -.043 REA .70 API 113 TI 67

A.I. Sire: W/C Executive Order 8543B on 5/3/17  
Due: 2/9/18 • Est. Plan Mating EPDs:  
12 -.4 66 101 .22 6 19 52 9 8.55  
Carcass: 29.15 -.31 .17 -.03 .92 128 75

**Pedigree for Lots 4 & 4A:**

**TNT Top Gun R244**

**JF Milestone 999W**

**Ms. Maxie Lou M112S**

**SVF Steel Force S701**

**HS/HSF Stella Y5243**

**HSF Victoria P30**

This is a mating I couldn't wait to try and it was extremely consistent. Take a look at these two powerhouse red baldies and you'll know what I mean. Milestone makes some tremendous females that are writing their own history as some top notch donors. I think these Stella x Milestone daughters are going to be extremely productive. They might look a little different in the pictures they took but honestly you couldn't get two that look more identical in type and kind, big boned, tremendous rib and capacity, beautifully balanced and easy going. If you've got a soft spot for the red ones, I bet these two make your short list!



4A





## HS DeeDee D605Z

**Black Baldy Dbl. Polled Purebred** ~ ASA#3251204  
BD: 3/3/16 ~ Tattoo: D605Z ~ Adj. BW: 72 ET

EPDs	CE	BW	WW	YW	ADG	MCE	Milk	MWW	Stay	DOC	CW	YG	Marb	BF	REA	API	TI
	8	2.1	67	96	.18	2	16	50	8	8.3	30.0	-.34	.07	-.067	.78	111	69

**Heads Up 20X ET**  
**LLSF Uprising Z925**  
**LLSF Untouchable U925**  
**SVF Steel Force S701**  
**HS/HSF Stella Y5243**  
**HSF Victoria P30**

The bold and beautiful comes to mind when I think of this girl. She's huge footed, long bodied, heavy structured, yet does it with so much eye appeal and style. She's big hiped, sound structured and really hairy. We've been extremely happy with our Uprising females. If you're a sucker for baldies like I am, I'm pretty sure you're really going to like this one!

A.I. Sire: W/C Executive Order 8543B on 5/6/17 • Due: 2/12/18  
Est. Plan Mating EPDs: 12 -.6 65 100 .21 5 19 52 7 9.3  
Carcass: 28.3 -.35 .21 -.04 .96 127 76



W/C Executive Order  
8543B, A.I. Sire



## HS Divine Lady D4620

**Black Dbl. Polled Purebred** ~ ASA#(3307341)  
BD: 3/6/16 ~ Tattoo: D4620 ~ Adj. BW: 88 ET

EPDs	CE	BW	WW	YW	ADG	MCE	Milk	MWW	Stay	DOC	CW	YG	Marb	BF	REA	API	TI
	5	2.1	62	85	.14	4	26	57	9	10.0	23.1	-.44	.12	-.096	.79	109	67

**Mr. NLC Upgrade U8676**  
**Sandeen Upper Class 2386**  
**Sandeen Donna 7386**  
**GFI Magnum K52**  
**SVF NJC Magnetic Ldy M25**  
**NJC Ebony Antoinette**

Yep, you read the pedigree right, a direct daughter of the famous Magnetic Lady! Talk about a powerhouse cow prospect. This girl is a ground sow, huge middled, easy keeping, yet has an attractive, balanced look to her. I could go on and on about how productive these Magnetic Lady daughters have been but I think it would be pointless, she's been one of the best and most well-known cows ever to grace the pastures for Sloup Simmentals.



A.I. Sire: W/C Executive Order 8543B on 5/4/17 • Due: 2/10/18  
Est. Plan Mating EPDs: 10 -.6 63 94 .19 7 24 56 8 10.15  
Carcass: 24.85 -.40 .23 -.06 .97 109 67



## HILB Promising Angel D206

**Homo. Black Polled 3/4 SM 1/4 AN** ~ ASA#3302342  
BD: 3/11/16 ~ Tattoo: D206 ~ Adj. BW: 75 ET

EPDs	CE	BW	WW	YW	ADG	MCE	Milk	MWW	Stay	DOC	CW	YG	Marb	BF	REA	API	TI
	4	1.3	51	75	.15	5	21	47	4	10.6	16.8	-.27	.08	-.033	.67	83	55



HILB Sent By Angels  
Maternal Sister to Lot 8

**Yardley High Regard W242**  
**W/C No Remorse 763Y**  
**DW Susanna 763T**  
**SVF Star Power S802**  
**AJE Jewels Halo**  
**AJE Jasmines Jewel 43T**

Although Halo is now doing great as a lead donor for Karrie Simmentals and Thyen Simmentals in South Dakota, she still leaves an impression on our program. Promising Angel is a half sister to the \$7,500 Sent By Angels that sold in the 2016 MN Beef Expo Sale. Nothing but good things have been said about the calving ease and grow of the Executive Order calves. Bull or heifer, her calf will be a plus in any program!



W/C Executive Order 8543B on 5/17/17 • Due: 2/23/18  
Est. Plan Mating EPDs: 9 -1.0 58 89 .20 7 22 50 5 10.45  
Carcass: 21.7 -.32 .21 -.03 .91 108 66



Gracie Family



## HILB SHER Undeniable Grace 732E

Black Dbl. Polled 1/2 SM 1/2 AN ~ ASA#3284152  
BD: 1/24/17 ~ Tattoo: 732E ~ Adj. BW: 86 ET

EPDs	CE	BW	WW	YW	ADG	MCE	Milk	MWW	Stay	DOC	CW	YG	Marb	BF	REA	API	TI
	10	.3	64	100	.22	9	25	57	9	10.0	29.6	-.34	.43	-.073	.74	121	72

2017 MN STATE FAIR CHAMPION PERCENTAGE FEMALE



S A V Bismarck 5682  
Bushs Unbelievable 423  
Bushs Blackbird 8708  
Mr. NLC Upgrade U8676  
AJE Miss Gracie Y7  
AJE Gabby R7

I had a pretty hard time letting go of Gracie last year and when these girls came home from pasture, it confirmed that cow is truly as versatile as they come. Thanks to Kinslee, these girls are extremely sweet dispositioned and with Junior Nationals in Minnesota next summer, it's game on for these ladies.

If you're looking for a heifer that has already hung purple, this Gracie Unbelievable daughter is truly... unbelievable. When she was crowned the 2017 MN State Fair Champion Percentage Heifer, beating the big girls, she gained a lot of friends and it's easy to see why. For her, it's a race to see what she can get you to complement first; her long elegant neck, huge middle or that crazy good set to her back leg. Sweet Jesus! If we could make them all with the set this one has on her rear wheels. Those that saw her at State fair, can't believe how much she has stoutened up since then but still moves like a jungle cat. We are as excited about what the future holds for this leading lady as any we have ever offered and are looking for a partner to enjoy the ride. **Selling 1/2 interest, possession negotiable.**

These three are the ones that are easy to stare at with a beverage in hand on a crisp night out in the pasture and dream of the awesome babies they could produce. We have always believed in a balance and when you can make girls this good with a set of numbers to back them up, look out world!



### Selling 3 IVF Sexed Heifer Embryos SVF Steel Force S701 x AJE Miss Gracie Y7

Est. PM EPDs: 7 1.85 65 95 .19 5 14 47 5 9.1  
Carcass: 29.0 -.37 .13 -.06 .95 107 69

Guaranteeing 160 day pregnancy if work is performed by a certified embryologist and 60 day ultrasound paperwork is provided.



SVF Steel Force S701  
Embryo Sire



AJE Miss Gracie Y7, Dam





## HILB Amazing Grace E928

Black Baldy Dbl. Polled Purebred ~ ASA#3299557  
BD: 2/19/17 ~ Tattoo: E928 ~ Adj. BW: 73 ET

EPDs	CE	BW	WW	YW	ADG	MCE	Milk	MWW	Stay	DOC	CW	YG	Marb	BF	REA	API	TI
	6	1.6	75	107	.20	6	18	56	8	11.6	35.3	-.39	.08	-.083	.89	112	74

WS Revival

LLSF Uprising Z925

SS Noreen

AJE Miss Gracie Y7

Mr. NLC Upgrade U8676

AJE Gabby R7

There is definitely a reason we named Amazing Grace as we did. Just watch her video and you will agree. Her neck comes so high out of her shoulder and the rest of her is just so complete! In the purebred division, I would sure want to be on the halter of this one and not behind her. Give this one a little more time and she has all the components to be deadly when she hits the ring as a big time heifer. Definitely the "show" heifer of the purebred offering.

#gameon **Retaining the right to one (1) successful flush on Amazing Grace at owner's expense and buyer's convenience with a minimum of six (6) transferrable embryos.**



AJE Miss Gracie Y7, Dam



10

## AMERICAN ROYAL RESERVE SPRING CALF



11



## HILB Order Of Grace E301

Black Dbl. Polled Purebred ~ ASA#3291266  
BD: 3/26/17 ~ Tattoo: E301 ~ Adj. BW: 78 ET

EPDs	CE	BW	WW	YW	ADG	MCE	Milk	MWW	Stay	DOC	CW	YG	Marb	BF	REA	API	TI
	10	-.3	68	104	.22	8	23	57	8	10.7	30.9	-.40	.25	-.054	1.07	128	78

W/C Executive Order 8543B

W/C United 956Y

Miss Werning KP 8543U

AJE Miss Gracie Y7

Mr. NLC Upgrade U8676

AJE Gabby R7

Order of Grace has been a powerhouse since birth. This Executive Order daughter has done all we have expected this fall. Started small, grew well and is turning into a beautiful show heifer. This little lady made her showing debut in Kansas City at the American Royal and walked away with Reserve Spring Calf! Add same flush stipulation as the heifer above her. **Retaining the right to one (1) successful flush on Order of Grace at owner's expense and buyer's convenience with a minimum of six (6) transferrable embryos.**







## HILB Stolen Grace D422

**Black Baldy Dbl. Polled Purebred** ~ ASA#3301110  
BD: 5/1/16 ~ Tattoo: D422 ~ Adj. BW: 77 ET

EPDs	CE	BW	WW	YW	ADG	MCE	Milk	MWW	Stay	DOC	CW	YG	Marb	BF	REA	API	TI
	7	1.9	66	95	.18	5	14	47	6	9.1	29.0	-.37	.13	-.055	.95	108	69

SVF Steel Force S701

CNS Dream On L186

AJE Miss Gracie Y7

SVF Sheza Beauty L901

Mr. NLC Upgrade U8676

AJE Gabby R7

A.I. Sire: W/C Executive Order 8543B on 7/11/17 • Safe  
Due: 4/19/18

Est. Plan Mating EPDs: 11 -.7 65 99 .21 7 18 51 6 9.7

Carcass: 27.8 -.37 .24 -.04 1.05 125 76

Pasture Sire: ES Capital Gains on 7/26 to 8/12/17



W/C Executive Order  
8543B, A.I. Sire

View sale live and bid online at:

**LiveAuctions.TV**



AJE Miss Gracie Y7, Dam



## HILB Executive Grace D67

**Black Dbl. Polled Purebred** ~ ASA#3301113  
BD: 5/18/16 ~ Tattoo: D67 ~ Adj. BW: 61 ET

EPDs	CE	BW	WW	YW	ADG	MCE	Milk	MWW	Stay	DOC	CW	YG	Marb	BF	REA	API	TI
	10	-.3	68	104	.22	8	23	57	8	10.7	30.9	-.40	.25	-.054	1.07	128	78

W/C Executive Order 8543B

W/C United 956Y

AJE Miss Gracie Y7

Miss Werning KP 8543U

Mr. NLC Upgrade U8676

AJE Gabby R7

A.I. Sire: Bushs Unbelievable 423 on 5/5/17 • Heifer • Due: 2/11/18

Est. Plan Mating EPDs: 13 -1.2 62 99 .23 9 24 56 8 9.8

Carcass: 27.45 -.32 .48 -.06 .78 129 74



Bushs Unbelievable 423  
A.I. Sire





# Gabby Girls

Primo! Emma and Esmeralda are two young May babies with a world of future in the show ring. Primo daughters are commanding top dollars in several online sales this fall and these two share that geek necked, huge ribbed look. Not to forget the SHAG! #showdayhairwedocare. Eleanor is like the first heifer Gabby and the Res National Champion, Oracle. She may have made it to the barn a little late but this one seriously gets better every day with feed and TLC. If your looking for a Gabby daughter to go straight to the production pen, Rise Above and Steel My Lady are both bred to Executive Order! Rise Above is a full sister to the \$40,000 HILB Enchantress owned by Hudson Pines and Tingle Farms and Steel My Lady is a full sister to the \$50,000 HILB Hollywood Secrets owned with Prospect Cattle Co. Both females would be a great add to any program!



## HILB Miss Emma E416

Black Polled 1/2 SM 1/2 AN ~ ASA#3307320  
BD: 5/2/17 ~ Tattoo: E416 ~ Adj. BW: 76 ET



## HILB Esmeralda E106B

Black Polled 1/2 SM 1/2 AN ~ ASA#3302384  
BD: 5/2/17 ~ Tattoo: E106B ~ Adj. BW: 84 ET

### Pedigree, EPDs & Footnote for Lots 14 & 14A:

EPDs	CE	BW	WW	YW	ADG	MCE	Milk	MWW	Stay	DOC	CW	YG	Marb	BF	REA	API	TI
	11	.0	61	92	.20	10	26	56	7	9.6	24.7	-.13	.17	-.032	.35	102	62

Dameron First Class  
Colburne Primo 5153  
Silveiras Saras Dream 1339  
3C Macho M450 BZ  
AJE Gabby R7  
CMB Glamourama J7



## Selling 3 IVF Sexed Heifer Embryos Colburn Primo 5153 x AJE Gabby R7

Est. PM EPDs:  
11 .0 61 92 .20 10 26 56 7 9.65  
Carcass: 24.65 -.13 .17 -.03 .35 102 62

Guaranteeing 1 60 day pregnancy if work is performed by a certified embryologist and 60 day ultrasound paperwork is provided.



## HILB Eleanor E905

Black Polled Purebred ~ ASA#3302386  
BD: 2/6/17 ~ Tattoo: E905 ~ Adj. BW: 84 ET

EPDs	CE	BW	WW	YW	ADG	MCE	Milk	MWW	Stay	DOC	CW	YG	Marb	BF	REA	API	TI
	6	1.7	61	84	.14	8	27	58	8	11.2	22.0	-.35	.01	-.081	.61	103	64



## Selling 3 IVF Sexed Heifer Embryos HILB Oracle C033R x AJE Gabby R7

Est. PM EPDs: 6 1.7 61 84 .14 7 27 58 8 11.2  
Carcass: 21.95 -.35 .01 -.08 .62 103 64

Guaranteeing 1 60 day pregnancy if work is performed by a certified embryologist and 60 day ultrasound paperwork is provided.

LLSF Uprising Z925  
HILB Oracle C033R  
SS Babys Breath P035  
3C Macho M450 BZ  
AJE Gabby R7  
CMB Glamourama J7



AJE Gabby R7, Dam





## HILB Rise Above D102

Black Baldy Polled Purebred ~ ASA#330111  
BD: 3/28/16 ~ Tattoo: D102 ~ Adj. BW: 94 ET

EPDs	CE	BW	WW	YW	ADG	MCE	Milk	MWW	Stay	DOC	CW	YG	Marb	BF	REA	API	TI
	4	2.4	70	102	.20	6	24	60	6	11.3	33.9	-.32	.02	-.082	.64	99	69



Heads Up 20X ET  
LLSF Uprising Z925  
LLSF Untouchable U925  
3C Macho M450 BZ  
AJE Gabby R7  
CMB Glamourama J7



W/C Executive Order 8543B, A.I. Sire

A.I. Sire: W/C Executive Order 8543B on 6/3/17 • Due: 3/12/18  
Est. Plan Mating EPDs: 9 -.45 67 103 .22 7 23 57 6 10.8  
Carcass: 30.25 -.34 .18 -.05 .89 121 76



## HILB/Jass In Ur Sight E1232

Black Dbl. Polled 1/2 SM 1/2 AN ~ ASA#3299558  
BD: 3/12/17 ~ Tattoo: E1232 ~ Adj. BW: 75 ET

EPDs	CE	BW	WW	YW	ADG	MCE	Milk	MWW	Stay	DOC	CW	YG	Marb	BF	REA	API	TI
	9	2.8	75	121	.29	6	32	69	10	11.8	46.4	-.35	.36	-.044	1.21	118	74

S A V Brilliance 8077  
PVF Insight 0129  
PVF Missie 790  
R&R Chamberlain X744  
AJE Miss Ella Z77  
AJE Gabby R7



AJE Miss Ella Z77  
Dam

Unfortunately, Ella went to greener pastures this spring but this Insight heifer is ready to continue her legacy. In Ur Sight resembles her Iowa State Fair Champion mother in so many ways especially how soft made she is through the center portion of her body. She rocks a sweet square hip and sets down fluidly on a huge foot. With her stellar build and extra happy personality, she is going to be a ton of fun in that March percentage division next summer! After she's done on the tan bark, In UR Sight is the kind that will always be a beautiful front pasture cow that will have tons of potential in the donor pen! Our favorite Ella daughter she blessed us with and are **retaining the right to one (1) successful flush on Amazing Grace at owner's expense and buyer's convenience with a minimum of six (6) transferrable embryos.**



## HILB Steel My Lady D38

Black Dbl. Polled Purebred ~ ASA#3301114  
BD: 3/12/16 ~ Tattoo: D38 ~ Adj. BW: 85

EPDs	CE	BW	WW	YW	ADG	MCE	Milk	MWW	Stay	DOC	CW	YG	Marb	BF	REA	API	TI
	6	1.1	58	82	0.15	6	17	46	6	8.1	20.1	-.30	.03	-.047	.68	100	63

CNS Dream On L186  
SVF Steel Force S701  
SVF Sheza Beauty L901  
3C Macho M450 BZ  
AJE Gabby R7  
CMB Glamourama J7



A.I. Sire: W/C Executive Order 8543B on 5/16/17 • Due: 2/22/18  
Est. Plan Mating EPDs: 11 -1.1 61 92 .20 8 20 50 6 9.2  
Carcass: 23.35 -.33 .19 -.03 .91 122 73





## HSF Callie D613

Black DbI. Polled 1/2 SM 1/2 AN ~ ASA#3152709

BD: 1/11/16 ~ Tattoo: D613 ~ Adj. BW: 90 ET

EPDs	CE	BW	WW	YW	ADG	MCE	Milk	MWW	Stay	DOC	CW	YG	Marb	BF	REA	API	TI
	9	1.5	64	97	.20	4	19	51	10	9.2	29.8	-.16	.32	-.031	.53	101	66

Dameron First Class  
EXAR Classen 1422B  
EXAR Princess 2006  
LLSF Uprising Z925  
HSF Carmella D410  
HSF Victoria P30

This one has been a favorite of mine from day one. This girl has phenomenal rib shape, structure, body, a no holes pedigree and she has the look. Her donor dam, Carmella, is a Victoria daughter that we kept to replace Victoria in the future and she's already proven she is up to the challenge. Sells bred to the hot new 20-20 bull for a January calf. He calves super easy and boy are they good. **Retaining the right to one (1) successful flush at owner's expense and buyer's convenience with a minimum of six (6) transferrable embryos.**



HSF Carmella B410, Dam



HSF Claudia D607  
Full Sister



A.I. Sire: Mr. CCF 20-20 on 4/10/17 • Due: 1/18/18  
Est. Plan Mating EPDs: 10 1.95 69 103 .21 6 17 52 9 10.65  
Carcass: 33.9 -.26 .21 -.05 .75 116 69



Mr. CCF 20-20  
A.I. Sire



# Crazy N Love Family

Crazy 2 Believe has been one of our favorite purebreds all fall. This little one looks SO much like N Love as a baby, except a bit prettier fronted. If someone wants to play big time next fall in the purebred division, this heifer needs a serious look. So good at the ground, huge rib and blends it all into a smooth shoulder. Pays to Believe needs no introduction to the breed and as far as purebreds go, this one is flat out good. **Reserving a flush on Crazy 2 Believe at the seller's expense and buyer's convenience with the minimum of six (6) #1 transferable embryos.** Crazy 4 You and Shimmering Love are the first bred females to sell out of N Love. We were excited to keep a few girls back to see how beautiful they would develop and these two Uprising girls didn't disappoint as they were two of our favorite breds all fall. Bonus feature is they are both bred to Executive Order!



## HILB/Jass Crazy 2 Believe E496Z

**Black Dbl. Polled Purebred**

ASA#3299554

BD: 3/13/17 ~ Tattoo: E496Z

Adj. BW: 83 ET

EPDs	CE	BW	WW	YW	ADG	MCE	Milk	MWW	Stay	DOC
	6	1.7	58	79	.13	6	17	45	8	10.9
	CW	YG	Marb	BF	REA	API	TI			
	19.1	-.35	.18	-.046	.83	110	66			

CNS Pays To Dream T759  
 LLSF Pays To Believe ZU194  
 LLSF Ura Baby Doll U194  
 Mr. HOC Broker  
 HILB Crazy N Love A475S  
 SS Babys Breath P035



HILB Crazy N Love  
 A475S, Dam





## HILB/Jass Crazy 4 You D105

Black Dbl. Polled Purebred ~ ASA#3301108  
BD: 5/3/16 ~ Tattoo: D105 ~ Adj. BW: 93 ET

EPDs	CE	BW	WW	YW	ADG	MCE	Milk	MWW	Stay	DOC							
	4	2.5	67	95	.17	4	21	54	5	11.6	CW	YG	Marb	BF	REA	API	TI
											29.9	-.39	.00	-.090	.75	96	66

A.I. Sire: W/C Executive Order 8543B on 6/23/17 • Safe • Due: 4/1/18  
Est. Plan Mating EPDs: 10 -.4 66 99 .21 7 22 54 6 10.95  
Carcass: 28.25 -.38 .17 -.06 .95 119 75  
Pasture Sire: W/C Executive Order 8543B on 6/23 to 7/16/17

Pedigree for Lots 21 & 21A:  
LLSF Uprising Z925

Heads Up 20X ET  
LLSF Untouchable U925  
Mr. HOC Broker  
SS Babys Breath P035

HILB Crazy N Love A475S



W/C Executive Order 8543B, A.I. Sire



## HILB/Jass Shimmering Love 76D

Black Dbl. Polled Purebred ~ ASA#3245057  
BD: 3/16/16 ~ Tattoo: 76D ~ Adj. BW: 84 ET

EPDs	CE	BW	WW	YW	ADG	MCE	Milk	MWW	Stay	DOC							
	4	2.5	67	95	.17	4	21	54	5	11.6	CW	YG	Marb	BF	REA	API	TI
											29.9	-.39	.00	-.090	.75	96	66

A.I. Sire: W/C Executive Order 8543B on 6/13/17 • Due: 3/22/18  
Est. Plan Mating EPDs: 10 -.4 66 99 .21 7 22 54 6 10.95  
Carcass: 28.25 -.38 .17 -.06 .95 119 75  
Pasture Sire: W/C Executive Order 8543B on 6/16 to 7/16/17



HILB Crazy N Love A475S, Dam



# Babys Breath Family



As most know, Babys Breath went on to greener pastures this spring. Rough day for everyone at HILB, but it makes us appreciate these girls out of her even more. You won't have the opportunity to buy a direct daughter out of Babys Breath much longer so take a hard look at these three. Baby On The Rise is a full sister to the 2015 NAILE Res Champion Purebred Bull, HILB Oracle, now in the herd bull battery at Spivey Farms and also to Risen Baby selected by Prospect Cattle Co in the 2016 Jewels of the Northland. The combination of Babys Breath and Executive Order earned a purple banner in the 2017 NWSS Pen heifer show and makes us think we should be keeping this one just for what she's cooking! Best of My Love is a full sister to the NAILE and NWSS Champion HILB Crazy N Love, owned with Jass Simmentals. This combination is timeless and is flat consistently good. Crazy N Love didn't waste any time in making stellar daughters, Best of My Love is ready to follow in her sisters footsteps. Babys Breath was always pretty conservative when it comes to white so Love Song is certainly special for her baldy face. Revival daughters topped sales all over the country last year. She would be a great maternal addition to any program!

## 22 HILB/SHER Love Song 772E

**Black Baldy Polled Purebred** ~ ASA#3302382  
BD: 3/12/17 ~ Tattoo: 772E ~ Adj. BW: 86 ET

EPDs	CE	BW	WW	YW	ADG	MCE	Milk	MWW	Stay	DOC	CW	YG	Marb	BF	REA	API	TI
	9	.3	62	81	.12	7	23	54	10	12.6	18.0	-.40	.03	-.085	.69	113	67

WS Revival

LLSF Uprising Z925

SS Babys Breath P035

SS Noreen

SS Goldmine L42

SVF Breath Taker J130



SS Babys Breath P035, Dam



2017 NWSS Res. Champion Pen of 3, Maternal Siblings



## 23 HILB Best of My Love E148B

**Black Polled Purebred** ~ ASA#3302383  
BD: 2/6/17 ~ Tattoo: E148B ~ Adj. BW: 73 ET

EPDs	CE	BW	WW	YW	ADG	MCE	Milk	MWW	Stay	DOC
	3	2.4	58	77	.12	5	22	51	8	9.8

CW	YG	Marb	BF	REA	API	TI
18.9	-.38	-.11	-.084	.64	89	58

Mr. HOC Broker

SVF Steel Force S701

SS Babys Breath P035

JM BF H25

SS Goldmine L42

SVF Breath Taker J130



## Selling 2 IVF Sexed Heifer Embryos Mr. HOC Broker x SS Babys Breath P035

Est. PM EPDs: 3 2.4 58 77 .12 5 22 51 8 9.75  
Carcass: 18.9 -.39 -.11 -.08 .64 89 58



## 24 HILB Baby On The Rise D691

**Black Polled Purebred** ~ ASA#3272945  
BD: 3/14/16 ~ Tattoo: D691 ~ Adj. BW: 81 ET

EPDs	CE	BW	WW	YW	ADG	MCE	Milk	MWW	Stay	DOC	CW	YG	Marb	BF	REA	API	TI
	8	1.7	65	90	.16	6	26	59	7	13.2	25.4	-.40	.07	-.092	.71	108	69

LLSF Uprising Z925

Heads Up 20X ET

SS Babys Breath P035

LLSF Untouchable U925

SS Goldmine L42

SVF Breath Taker J130

A.I. Sire: W/C Executive Order 8543B on 5/28/17 • Due: 3/6/18  
Est. Plan Mating EPDs: 11 -.8 64 96 .20 7 24 56 7 11.75  
Carcass: 26.0 -.38 .21 -.06 .93 125 76



Mr. HOC Broker  
Lot 23 Sire & Lot 23A  
Embryo Sire



W/C Executive Order  
8543B, Lot 24 A.I. Sire





## HS Neon Disco D165

Homo. Black Baldy Dbl. Polled Purebred ~ ASA#3244854  
BD: 10/08/16 ~ Tattoo: D165 ~ Adj. BW: 71 ET

Neon Rey Family

EPDS	CE	BW	WW	YW	ADG	MCE	Milk	MWW	Stay	DOC
	6	1.4	70	104	.22	3	18	53	8	10.6

CW	YG	Marb	BF	REA	API	TI
33.9	-.24	.08	-.044	.71	110	71

LLSF Uprising Z925

WS Revival

SS Noreen

Triple C El Poderoso Rey

LLSF Neon Rey

JBS Neon N1001

I absolutely love this one, she might not be a slick fronted show heifer but she is going to make one whale of cow. Big time donor potential here! She's big hiped, huge bellied, has a beautiful soft rear leg, takes a long gorgeous step and trails wide and straight. Jaxon showed her this past summer and she had people asking about her everywhere we went. I can't wait to see what this one looks like as a bred next year. She's going to be impressive! It's no secret that the Neon daughters have been really popular and I have no doubt that this one is going to be a crowd favorite! **Hilbrands Simmentals reserves the right to one (1) flush, with a minimum of six (6) freezable embryos at the seller's expense and the buyer's convenience.**



LLSF Neon Rey  
Dam

Juniors...



We have your next winner!





## HS Neon Enchantment E529

Black Dbl. Polled Purebred ~ ASA#3298998  
BD: 2/18/17 ~ Tattoo: E529 ~ Adj. BW: 95 ET

EPDs	CE	BW	WW	YW	ADG	MCE	Milk	MWW	Stay	DOC	CW	YG	Marb	BF	REA	API	TI
	7	1.6	58	101	.27	5	18	47	8	10.3	33.2	-.36	.04	-.048	1.03	109	65

Remington Lock N Load 54U

Remington On Target 2S  
Bar15 Miss Knight 78E-51G  
Triple C El Poderoso Rey  
JBS Neon N1001

LLSF Neon Rey

Two years ago, there was a Combustible x Neon daughter that we told everyone was going to make one heck of a show heifer, we weren't wrong. Foreman and McKinney selected her off the sale that year and she later went on to be named Grand Champion Female at the Iowa State Fair open show and Reserve Champion at MN State Fair open show. This heifer really reminds us a lot of that girl only with an added shot of muscle and power. Hold on to your hats cuz it could be a really fun ride if you're lucky enough to be leading this heifer next summer! To top it all off, when it's all said and done, you're going to have one heck of an outcross donor on your hands!!!



HS Neon Candy C18U  
Maternal Sister



## HS Neon Eclipse E38Z

Homo. Black Snip Dbl. Polled 3/4 SM 3/16 AN 1/16 CS ~ ASA#3298999  
BD: 3/2/17 ~ Tattoo: E38Z ~ Adj. BW: 96 ET

EPDs	CE	BW	WW	YW	ADG	MCE	Milk	MWW	Stay	DOC	CW	YG	Marb	BF	REA	API	TI
	4	2.8	73	113	.25	2	21	58	5	11.3	41.3	-.24	.12	-.051	.73	105	72

LLSF Uprising Z925

Heads Up 20X ET

LLSF Untouchable U925

LLSF Neon Rey

Triple C El Poderoso Rey

JBS Neon N1001



LLSF Neon Rey, Dam

These Neon daughters have made some phenomenal show heifers and if you're looking for something to run with in the percentage division, I think this Uprising daughter is going to be pretty competitive. Check out her video or better yet come see her in person. Her picture doesn't do her justice. I didn't quite have her broke enough yet to relax for a halter pic so we went with a loose one. It's good, but this heifer is really neat. Smooth made and extended through that front one third, sound footed, nice hiped and just a splash of white on the face to get her noticed! She'll be a head turner when she steps foot in the ring next summer!







## HS Neon Essence 705E

Homo. Black Dbl. Polled 3/4 SM 1/4 AN ~ ASA#3298997  
BD: 2/23/17 ~ Tattoo: 705E ~ Adj. BW: 83 ET

EPDs	CE	BW	WW	YW	ADG	MCE	Milk	MWW	Stay	DOC	CW	YG	Marb	BF	REA	API	TI
	5	.7	49	73	.15	4	26	50	8	10.3	14.6	-.18	.18	-.013	.73	99	57

### Pedigree for Lots 28 & 28A:

W/C BF Innocent Man W/C No Remorse 763Y  
Miss Werning 174Y  
LLSF Neon Rey Triple C El Poderoso Rey  
JBS Neon N1001



W/C BF Innocent Man, Sire

These two Neon x Innocent Man daughters are pretty cool, each a little different in their type and kind but wow, talk about some really nice prospects. Essence appears to be the showier of the two, giving you a little bit more of a show ring look. She's good boned, smooth made and really well balanced from head to tail. Another really good percentage heifer that should be competitive next summer! Echo is the one that's going to jump out at you as another really good cow prospect. She's so well structured though that you could probably show her if you wanted to. This one is made a lot like the fall Revival I really love. Just has that real soft cowy presence about her. It's hard not to fall in love with those kind.



## HS Neon Echo 706E

Homo. Black Dbl. Polled 3/4 SM 1/4 AN ~ ASA#3307342  
BD: 2/26/17 ~ Tattoo: 706E ~ Adj. BW: 79 ET

EPDs	CE	BW	WW	YW	ADG	MCE	Milk	MWW	Stay	DOC	CW	YG	Marb	BF	REA	API	TI
	5	.7	49	73	.15	4	26	50	8	10.3	14.6	-.18	.18	-.013	.73	99	57







## HS Neon Daze D04U

Black DbI. Polled Purebred ~ ASA#3303387  
BD: 3/7/16 ~ Tattoo: D04U ~ Adj. BW: 93 ET

EPDs	CE	BW	WW	YW	ADG	MCE	Milk	MWW	Stay	DOC	CW	YG	Marb	BF	REA	API	TI
	9	1.5	59	89	.19	5	21	51	10	8.9	25.5	-.20	.12	-.044	.48	116	66

SVF/NJC Built Right N48

CNS Dream On L186

LLSF Neon Rey

NJC Ebony Antoinette

Triple C El Poderoso Rey

JBS Neon N1001



TJ Main Event 503B  
A.I. Sire

We probably should have worked a little harder at getting this bred heifer out and ready for the show ring this past year, she's so beautifully put together. We've always loved the Built Right females and thought he would be the perfect complement to producing some phenomenal Neon daughters. I think we might have been on to something! Study her lines and her angles. If your income is based on producing show stock, make sure this one is on your short list!

A.I. Sire: TJ Main Event 503B on 6/10/17 • Due: 3/19/18  
Est. Plan Mating EPDs: 11 -.65 80 116 .23 6 23 63 10 10.2  
Carcass: 37.25 -.20 .29 -.04 .63 130 81



## HS Neon Diamonds D8X

Black Baldy DbI. Polled Purebred ~ ASA#3159121  
BD: 2/28/16 ~ Tattoo: D8X ~ Adj. BW: 77 ET

EPDs	CE	BW	WW	YW	ADG	MCE	Milk	MWW	Stay	DOC	CW	YG	Marb	BF	REA	API	TI
	7	1.6	60	93	.20	2	14	44	5	8.1	27.5	-.22	.13	-.016	.77	105	66

SVF Steel Force S701

CNS Dream On L186

LLSF Neon Rey

SVF Sheza Beauty L901

Triple C El Poderoso Rey

JBS Neon N1001

This flashy blazed face daughter of Neon and Steel Force was one of Jaxon's show heifers this past year. He likes to pick them on temperament first and good looks second. He thought he hit the jackpot with this one, she's got both! Big topped, big middled with lots of earning potential. You can't go wrong adding these powerful made baldy Steel Force daughters to your herd. These are the kind that can make you money all day long!



LLSF Neon Rey, Dam



W/C Executive Order  
8543B, A.I. Sire

A.I. Sire: W/C Executive Order 8543B on 5/14/17 • Due: 2/20/18  
Est. Plan Mating EPDs: 11 -.85 62 98 .22 6 18 49 6 9.2  
Carcass: 27.05 -.29 .24 -.02 .96 124 74







## HS Emerald Glitz E8X

Homo. Black DbL. Polled Purebred ~ ASA#3299000

BD: 3/5/17 ~ Tattoo: E8X ~ Adj. BW: 92 ET

CE	BW	WW	YW	ADG	MCE	Milk	MWW	Stay	DOC	CW	YG	Marb	BF	REA	API	TI
8	2.0	58	80	.14	7	20	49	10	9.8	20.5	-.25	.17	-.021	.74	115	66

TKCC Carver 65C

WS Pilgrim H182U

Ford RJ Dolly Y83

HS Neon Glitz B720

SS/PRS Gunslinger 824X

LLSF NEON Rey

Neon Glitz is the first Neon daughter we've ever kept back for ourselves. We were pretty excited about getting her into production but unfortunately, she calved early the first year and we lost that calf otherwise, I think you would have heard from her sooner! Check out this beautiful Carver daughter and how well those two combined. Emerald Glitz is stout boned, packed with red meat, extremely sound on the move and super hairy!!! She could be a fun one to play with at Nationals next summer!



HS Neon Glitz B720  
Dam



31



## HILB/SHER Dahlonge 736E

Black Baldy DbL. Polled 3/4 SM 3/16 AN 1/16 MA ~ ASA#3291270

BD: 2/5/17 ~ Tattoo: 736E ~ Adj. BW: 88 ET

CE	BW	WW	YW	ADG	MCE	Milk	MWW	Stay	DOC	CW	YG	Marb	BF	REA	API	TI
9	.2	61	86	.16	5	13	44	5	10.8	21.0	-.26	-.04	-.041	.64	92	59

WS Revival

LLSF Uprising Z925

SS Noreen

GCC What A Girl 101W

SVF Steel Force S701

GCC Miss Griz 3850



GCC What A Girl 101W  
Dam

Once in a great while you may find "the one" in a little dive bar...the one that you have waited for...the one that makes you realize that its time to stop messing around with "just heifers" and commit to a true front pasture donor cow. That's Dahlonge and praise Jesus, you don't have to go all the way to Atlanta, Georgia like Ashley McBride sings about. What A Girl was always special and now that she is no long with us, it makes Dahlonge a prime candidate to carry on her legacy. She is so long bodied and giraffe necked. Just watch her video...you will see why we are excited about the future of this Revival daughter.



32





**Selling 1/2 interest in Ever After with the option to double the bid for full ownership.**

In the event the bid is doubled, we reserve the right to split two successful flushes with a minimum 6 transferable embryos.



HILB Fairy Tale B5 Dam



### HILB/MBCC Ever After E3972

**Black Dbl. Polled Purebred** ~ ASA#3299556

BD: 3/1/17 ~ Tattoo: E3972 ~ Adj. BW: 73 ET

EPDs	CE	BW	WW	YW	ADG	MCE	Milk	MWW	Stay	DOC	CW	YG	Marb	BF	REA	API	TI
	12	-.7	69	105	.23	7	20	55	6	10.9	31.5	-.38	.14	-.050	1.05	122	76

W/C Executive Order 8543B

HILB Fairy Tale B5

W/C United 956Y

Miss Werning KP 8543U

LLSF Uprising Z925

HSF/HS Sheza Beauty U823



# Fairy Tale Family

We would like to take a minute to introduce you to one of our newest donors...Fairy Tale! Sheza Beauty has produced so many donor daughters we knew when Fairy Tale was born we had to keep her for ourselves. We didn't sample much Relentless last year, but he worked great on her! Tinker Bell has a striking profile and is so fluid from front to rear. We think this heifer could be seriously competitive in the purebred division next fall! Fairy Dust and Ever after have always screamed donor cow. If your looking for a younger heifer to be seriously competitive in the May purebred division, Fairy Dust needs a hard look. Ever After has been a beast and total stand out in the pasture since birth. Both these Executive Order daughters are so incredibly versatile! Stout made, yet super sound, huge bellies and long pretty front ends... not only could these girls make killer show heifers but also if you wanted to compete with pen bulls, they could do that too. Let them kill it in the show ring, then turn them out and let them make you money. Give us a call, we would love to discuss what we feel Ever After means to our program and to the progression of the Simmental breed. #breedchanger



## HILB/MBCC Fairy Dust E97B

Black Dbl. Polled Purebred ~ ASA#3291265  
BD: 5/5/17 ~ Tattoo: E97B ~ Adj. BW: 70 ET

EPDs	CE	BW	WW	YW	ADG	MCE	Milk	MWW	Stay	DOC	CW	YG	Marb	BF	REA	API	TI
	12	-.7	69	105	.23	7	20	55	6	10.9	31.5	-.38	.14	-.050	1.05	122	76

W/C Executive Order 8543B    W/C United 956Y  
Miss Werning KP 8543U  
HILB Fairy Tale B5        LLSF Uprising Z925  
HSF/HS Sheza Beauty U823



## HILB/MBCC Tinker Bell E3975

Black Dbl. Polled Purebred ~ ASA#3302380  
BD: 3/5/17 ~ Tattoo: E3975 ~ Adj. BW: 70 ET

EPDs	CE	BW	WW	YW	ADG	MCE	Milk	MWW	Stay	DOC	CW	YG	Marb	BF	REA	API	TI
	10	1.7	67	94	.17	7	17	50	6	11.4	28.1	-.40	.11	-.060	1.01	111	71

W/C Relentless 32C    Yardley Utah Y361  
Miss Werning KP 8543P  
HILB Fairy Tale B5        LLSF Uprising Z925  
HSF/HS Sheza Beauty U823





# Sheza Beauty Family



## HILB/SHER Loaded Beauty 773E

Red Baldy Dbl. Polled Purebred ~ ASA#3299553  
BD: 3/12/17 ~ Tattoo: 773E ~ Adj. BW: 89 ET

EPDs	CE	BW	WW	YW	ADG	MCE	Milk	MWW	Stay	DOC
10	-1	59	81	.14	8	15	45	9	10.4	
	CW	YG	Marb	BF	REA	API	TI			
	17.7	-.48	-.10	-.070	1.03	107	63			

Remington Lock N Load 54U  
W/C Loaded Up 1119Y  
Aubreys Black Blaze III  
CNS Dream On L186  
HSF/HS Sheza Beauty U823  
SVF Sheza Beauty L901

Red baldy lovers listen up! Loaded Up has had high seller after high seller this fall and this girl could take a serious run at all of them in the quality department. Her front end alone is enough to get a persons heart pumping, but as your eye flows back towards her hip, you will just shake your head at how cool made this one is and being a purebred is the cherry on the sundae. You have heard us say before, Sheza Beauty makes girls destined for the donor pen and this one is no exception. Perfect Sight is a young, nice 20-20 heifer that just needs time and a little TLC. This one keeps impressing us the more she develops. Can't go wrong with this cow family!



## Selling 3 Embryos Mr. CCF 20-20 x HSF/HS Sheza Beauty U823

Est. PM EPDs: 12 1.25 67 97 .19 7 17 50 8 10.95  
Carcass: 29.1 -.40 .00 -.06 .97 113 69  
Guaranteeing 1 60 day pregnancy if work is performed by a certified embryologist and 60 day ultrasound paperwork is provided.



Mr. CCF 20-20  
Embryo Sire



HSF/HS Sheza Beauty U823  
Dam



## HILB/SHER Perfect Sight 775E

Black Star Dbl. Polled Purebred ~ ASA#3302377  
BD: 4/1/17 ~ Tattoo: 775E ~ Adj. BW: 81 ET

EPDs	CE	BW	WW	YW	ADG	MCE	Milk	MWW	Stay	DOC
12	1.3	67	97	.19	7	17	51	8	10.9	
	CW	YG	Marb	BF	REA	API	TI			
	29.1	-.39	.00	-.063	.96	113	69			

Mr CCF 20-20

HSF/HS Sheza Beauty U823

Mr. CCF Vision  
HTP SVF Dew The Stroke  
CNS Dream On L186  
SVF Sheza Beauty L901





37



Beautiful Dream is now one of the cornerstone donors for Klopfenstein Simmentals and Ver Ploeg Simmentals. Take your pick on a younger, neat made purebred by Uprising or a halfblood by Style that certainly does not lack style. Both girls are super stout and full of internal dimension just like their mother. Money in the bank with these two being bred to Executive Order!



### HILB Rising Dreams D805

**Black Dbl. Polled Purebred** ~ ASA#3272948

BD: 5/7/16 ~ Tattoo: D805 ~ Adj. BW: 80 ET

EPDs	CE	BW	WW	YW	ADG	MCE	Milk	MWW	Stay	DOC
	8	1.8	72	106	.20	5	16	52	3	13.5
	CW	YG	Marb	BF	REA	API	TI			
	34.4	-.37	.08	-.073	.90	104	72			

LLSF Uprising Z925

HS/HSF Beautiful Dream

Heads Up 20X ET

LLSF Untouchable U925

CNS Dream On L186

SVF Sheza Beauty L901

A.I. Sire: W/C Executive Order 8543B on 5/23/17 • Due: 3/1/18  
Est. Plan Mating EPDs: 11 -.75 68 104 .22 7 19 53 5 11.9  
Carcass: 30.5 -.37 .21 -.05 1.02 124 78



### HILB/SHER Stellar Style 665D

**Black Dbl. Polled 1/2 SM 1/2 AN** ~ ASA#3301109

BD: 3/24/16 ~ Tattoo: 665D ~ Adj. BW: 93 ET

EPDs	CE	BW	WW	YW	ADG	MCE	Milk	MWW	Stay	DOC
	15	-.5	54	84	.19	10	16	43	7	9.8
	CW	YG	Marb	BF	REA	API	TI			
	19.8	-.13	.45	-.004	.51	129	69			

Silveiras Style 9303

HS/HSF Beautiful Dream

Gambles Hot Rod

Silveiras Elba 2520

CNS Dream On L186

SVF Sheza Beauty L901

A.I. Sire: W/C Executive Order 8543B on 6/8/17 • Due: 3/17/18  
Est. Plan Mating EPDs: 15 -1.9 59 94 .22 10 19 49 7 10.05  
Carcass: 23.2 -.25 .40 -.01 .83 132 73

W/C Executive Order  
8543B, A.I. Sire



38



39



### JRA Executive Dream 603D

**Black Dbl. Polled Purebred** ~ ASA#3120717

BD: 3/1/16 ~ Tattoo: 603D ~ Adj. BW: 85

EPDs	CE	BW	WW	YW	ADG	MCE	Milk	MWW	Stay	DOC
	13	-.4	68	107	.24	6	18	53	9	11.2
	CW	YG	Marb	BF	REA	API	TI			
	33.1	-.31	.26	-.040	.95	136	79			

W/C Executive Order 8543B

JRA Dreamy Sweet 802U

W/C United 956Y

Miss Werning KP 8543U

CNS Dream On L186

RCC Powerfully Sweet P41

A.I. Sire: FHEN Halftime A127 on 5/15/17 • Safe • Due: 2/21/18  
Est. Plan Mating EPDs: 13 .6 68 110 .26 7 19 53 10 11.45  
Carcass: 36.35 -.18 .42 -.02 .76 135 76



FHEN Halftime A127  
A.I. Sire

As an impactful sire already, Executive Order is poised to create even bigger headlines as his first daughters enter production. With EO on the topside, this elegant and productive bred heifer has a bright future ahead. Executive Dream combines her pedigree with a stylish physical appearance and progressive genetic indicators. Her overall extension, smoothness, and performance is supported by extra substance underneath. Further complementing her build is an EPD profile that blends high calving ease and low birth weight with strong growth figures. With her balance of traits, this girl has merit in many business models. Carrying a Halftime baby only adds to the excitement of these valuable genetics.



# Bella Girls...



When you are Reserve at the North American in both the purebred and percentage bull shows, who doesn't celebrate by buying part of a powerhouse donor female over supper at the Cardinal? We could not be more excited about the things Bella is already doing as a young donor and offering these two ladies is just the beginning. Elsa was the winner of a big class at 2017 Minnesota State Fair and was complimented by Judge Patrick Wall for her overall completeness, attractive profile and stout hip. We think she really resembles Bella at this stage of the game and cannot wait to see her develop as a big heifer. Awakened Beauty is super long spindled Revival daughter who is flexible in her structure. With her elegant lines and feminine front end, time is on her side and she will only get better as she matures. Be the first to own a daughter of the 2017 NWSS Champion Percentage Female, Bella!



Hook's Bella B72  
Dam



## HILB/JRA Elsa 710E

Black Dbl. Polled 3/4 SM 1/4 AN ~ ASA#3275609  
BD: 3/19/17 ~ Tattoo: 710E ~ Adj. BW: 88 ET

EPDs	CE	BW	WW	YW	ADG	MCE	Milk	MWW	Stay	DOC	CW	YG	Marb	BF	REA	API	TI
	3	3.2	78	126	.30	4	19	59	5	8.3	49.8	-.18	.11	-.041	.73	95	69

Mr. HOC Broker

SVF Steel Force S701

Hook's Bella B72

JM BF H25

W/C United 956Y

Hook's Upper Limit 117U



W/C Relentless 32C  
Embryo Sire



## Selling 3 Conventional Embryos W/C Relentless 32C x Hook's Bella B72

Est. PM EPDs: 10 1.45 73 116 .27 7 22 59 6 10.7  
Carcass: 41.05 -.23 .40 -.02 .92 125 78  
Guaranteeing 160 day pregnancy if work is performed by a certified embryologist  
and 60 day ultrasound paperwork is provided.



## HILB/JRA Awakened Beauty E180B

Homo. Black Baldy Homo. Polled 3/4 SM 1/4 AN ~ ASA#3299467  
BD: 2/18/17 ~ Tattoo: E180B ~ Adj. BW: 85 ET

EPDs	CE	BW	WW	YW	ADG	MCE	Milk	MWW	Stay	DOC	CW	YG	Marb	BF	REA	API	TI
	9	1.0	82	130	.30	6	21	62	7	11.1	48.9	-.20	.25	-.042	.78	119	79

WS Revival

Hook's Bella B72

LLSF Uprising Z925

SS Noreen

W/C United 956Y

Hook's Upper Limit 117U





# Firefly Girls...

JSF Firefly W46  
DamHILB Butterfly  
Maternal Sister

## HILB On Fire E3770

Red Dbl. Polled Purebred ~ ASA#3302385  
BD: 2/10/17 ~ Tattoo: E3770 ~ Adj. BW: 69 ET

EPDs	CE	BW	WW	YW	ADG	MCE	Milk	MWW	Stay	DOC	CW	YG	Marb	BF	REA	API	TI
	9	.6	65	99	.21	7	22	55	7	12.6	30.0	-.35	.15	-.044	.99	118	72

W/C Executive Order 8543B W/C United 956Y  
Miss Werning KP 8543U  
JSF Firefly W46 STF/RP Savvy SR49  
Casons Miss Amanda

"Somebody told me if I'm not careful, well, this one's gonna roll me. I got my hands full and this one's gonna own me and control me....Everybody knows she's a perfect ten, and I'm hanging on tight til the whole thing ends 'cause New York sky don't get much brighter....She sets, she sets the city on fire" Gavin Degraw was SURELY singing about this heifer when he wrote She Sets the City On Fire. This smoking hot red head is destined for the donor pen. The true length of body and stoutness of this female makes one dream of Champion Pen bulls in Denver while their sisters strike victory on this Hill. Half sister to the \$42,000 now deceased Butterfly, owned by Hudson Pines, here is your chance to let On Fire carry on the Firefly legacy. You won't want to let this one slip the cracks. #Gavinsaidsoperfect10 **Reserving a flush on On Fire at the sellers expense and buyers convenience with the minimum of 6 #1 transferable embryos.**



43

Halls Confidence A30  
Embryo Sire

## Selling 3 IVF Sexed Heifer Embryos Halls Confidence A30 x JSF Firefly W46

Est. PM EPDs: 12 1.5 60 91 .19 9 20 50 8 13.8  
Carcass: 26.5 -.26 .19 -.01 .87 112 64

Guaranteeing 160 day pregnancy if work is performed by a certified embryologist and 60 day ultrasound paperwork is provided.



## HILB Style On Fire D37

Black Dbl. Polled 1/2 SM 1/2 AN ~ ASA#3301112  
BD: 4/18/16 ~ Tattoo: D37 ~ Adj. BW: 84 ET

EPDs	CE	BW	WW	YW	ADG	MCE	Milk	MWW	Stay	DOC							
	12	1.8	57	91	.21	9	21	49	8	10.4	CW	YG	Marb	BF	REA	API	TI
											27.2	-.10	.39	-.012	.45	121	66

Gambles Hot Rod  
Silveiras Style 9303  
Silveiras Elba 2520  
STF/RP Savvy SR49  
JSF Firefly W46  
Casons Miss Amanda

Style on Fire is one of the first percentage females we have raised out of Firefly and woooooeeeeee! This girl came on like a vengeance and made us seriously regret not taking her to a few shows last fall. As cool as the Executive Orders out of Firefly herself are, super stylish things are ahead for this baby on the way with a 128 API! **Reserving a flush on Style On Fire at the sellers expense and buyers convenience with the minimum of 6 #1 transferable embryos.**

A.I. Sire: W/C Executive Order 8543B on 7/13/17 • Safe • Due: 4/21/18  
Est. Plan Mating EPDs: 13 -.75 60 97 .23 9 21 52 8 10.35  
Carcass: 26.9 -.23 .37 -.02 .80 128 72  
Pasture Sire: ES Capital Gains on 7/26 to 8/12/17

W/C Executive Order  
8543B, A.I. Sire

42





Pedigree for Lots 44 & 45:  
W/C United 956Y  
W/C Executive Order 8543B  
Miss Werning KP 8543U  
Remington Lock N Load 54U  
HS Burning Secret B120X  
Lazy H Burn Baby Burn R34



HS Burning Secret B120X  
Dam

Check out these two beautiful EO daughters out of our Lock N Load x Burn Baby Burn donor. After Secret Desire hit the ground, we knew right away Secret's first flush was going to be back to EO. Those ET calves hit the ground this year and we were extremely happy with how she did. Though a year apart in age, these two are made a lot alike, long bodied, sound footed, big ribbed with great dispositions. I can't wait to get these EO daughters into production and I think this combination of him with the Burn Baby Burn family is going to be pretty productive!



### HS Secret Escape E04U

Black Dbl. Polled Purebred ~ ASA#3307343  
BD: 3/8/17 ~ Tattoo: E04U ~ Adj. BW: 88 ET

EPDs	CE	BW	WW	YW	ADG	MCE	Milk	MWW	Stay	DOC	CW	YG	Marb	BF	REA	API	TI
12	.2	62	103	.26	8	21	52	7	10.6		32.2	-.37	.13	-.036	1.15	121	72



Silveiras Style 9303  
Embryo Sire



### Selling 3 IVF Non Sexed Embryos Silveiras Style 9303 x HS Burning Secret B120X

Est. PM EPDs: 14 1.35 54 95 .26 10 19 46 8 8.4  
Carcass: 29.4 -.12 .38 .00 .60 124 66  
Guaranteeing 160 day pregnancy if work is performed by a certified embryologist and 60 day ultrasound paperwork is provided.



### HS/Felt Secret Desire D120B

Black Dbl. Polled Purebred ~ ASA#3202656  
BD: 3/16/16 ~ Tattoo: D120B ~ Adj. BW: 95 ET

EPDs	CE	BW	WW	YW	ADG	MCE	Milk	MWW	Stay	DOC	CW	YG	Marb	BF	REA	API	TI
12	.2	62	103	.26	8	21	52	7	10.6		32.2	-.37	.13	-.036	1.15	121	72

A.I. Sire: TJ Main Event 503B on 6/9/17 • Due: 3/18/18  
Est. Plan Mating EPDs: 12 -1.3 82 123 .26 8 23 64 8 11.05  
Carcass: 40.6 -.29 .30 -.04 .97 132 84



TJ Main Event 503B  
A.I. Sire



45





### HS/HL/EKRD Endless Burn E16C

Black Dbl. Polled Purebred ~ ASA#3307346  
BD: 2/20/17 ~ Tattoo: E16C ~ Adj. BW: 88

EPDs	CE	BW	WW	YW	ADG	MCE	Milk	MWW	Stay	DOC
10	.6	70	112	.26	7	22	58	5	11.1	
	CW	YG	Marb	BF	REA	API	TI			
	37.6	-.32	.20	-.037	1.03	121	77			

W/C Executive Order 8543B W/C United 956Y  
Miss Werning KP 8543U  
HS Cool Burn C16X LLSF Uprising Z925  
Lazy H Burn Baby Burn R34

This heifer has absolutely exploded over the last month. Don't get me wrong, she's always had a really neat look to her and we've been big fans, but boy has she really turned it on! Unfortunately, I didn't have her on my radar when I started breaking calves for the sale and the first time she saw one was the day we pictured her. It may be a lose picture but check this one out! She's extremely powerful, huge ribbed, unbelievably sound and still has some look at style about her. We're really excited about getting Cool Burn into production and by the looks of her first natural calf we have every reason to be!



HS Cool Burn C16X  
Dam



### HS Queen Electra E04B

Red Dbl. Polled Purebred ~ ASA#3307345  
BD: 3/27/17 ~ Tattoo: E04B ~ Adj. BW: 93 ET

EPDs	CE	BW	WW	YW	ADG	MCE	Milk	MWW	Stay	DOC	CW	YG	Marb	BF	REA	API	TI
9	.0	58	79	.13	9	14	44	8	9.1		16.4	-.43	.04	-.059	.97	110	65

W/C Loaded Up 1119Y Remington Lock N Loaded 54U  
Aubreys Black Blaze III  
HPF Sazerac Z074 HTP/SVF Duracell T52  
CLRWTR Sazerac W94B

Wow! Where do I even start with this one! Talk about a cool, fancy made heifer that is so uniquely put together for a purebred Simmy! She is extremely neat fronted, huge topped and so smooth on the move. We've loved this one since the day she hit the ground and to be honest with you up until we got her blood type results back, I thought for sure Kip sent us some clubby embryos. Her dam, HPF Sazerac Z074 was campaigned quite successfully by Cameron Eggersman including her reign as the 2014 Junior National Champion! Full sibs to this mating have been extremely popular and when you get the chance to check out this young lady you'll know exactly why. **Offering 1/2 interest, possession negotiable**, we can't wait to get this one into production!



HPF Sazerac Z074  
Dam



# Black Glitter Daughter...



## HILB/SHER Glitter Bomb 649D

Black Dbl. Polled 1/2 SM 1/2 AN ~ ASA#3300971  
BD: 2/13/16 ~ Tattoo: 649D ~ Adj. BW: 90 ET

EPDs	CE	BW	WW	YW	ADG	MCE	Milk	MWW	Stay	DOC
	10	1.5	59	87	.18	1	19	48	10	11.1
	CW	YG	Marb	BF	REA	API	TI			
	23.8	-.29	.43	-.044	.72	127	69			



The influence Glitter has had on our program and the Simmental breed through her daughters, granddaughters, great granddaughters has been truly amazing and doesn't look like it is going to stop any time soon. I am confident to say as long as we are raising Simmental cattle at HILB, and hopefully Kinslee is raising Simmentals long after we are not part of it, you will continue to see the influence of this amazing cow family. Glitter was starting to make a name for herself already as a calf and show heifer and when we decided to flush her to Lookout is what took her to another level. Glitter Bomb's full sibs have won major shows but the most impressive features they possess is when you get them into production. Perfect udder, low maintenance, flat out money making mommas! Glitter Bomb is super massive and beautiful in her design. The term donor is probably over used at times when marketing seed stock females but I am confident that when this female's days are over, she will have more than earned her way into the hall of fame and will be more than deserving to be called a DONOR. This female is the result of the last Glitter x Lookout embryo we had in the tank and is definitely "The Bomb". **Reserving a flush on Glitter Bomb at the sellers expense and buyers convenience with the minimum of 6 #1 transferable embryos.**

B C Lookout 7024

HHSF Black Glitter

O C C Legend 616L  
Gibbet Hill Mignonne E37  
PCC Night Moves H10  
HHSF Black Matilda

A.I. Sire: CAJS Blaze Of Glory on 5/8/17 • Due: 2/14/18  
Est. Plan Mating EPDs: 13 -.15 58 79 .14 6 18 46 8 11.45  
Carcass: 16.4 -.30 .33 -.04 .68 121 68



CAJS Blaze Of Glory  
A.I. Sire



HHSF Black Glitter  
Dam



# Stop & Stare Family



## HILB Prime Stare E011

Black Polled 1/2 SM 1/2 AN ~ ASA#3299654  
BD: 4-28-17 ~ Tattoo: E011 ~ Adj. BW: 84 ET



HS Stop And Stare U118L, Dam

EPDs	CE	BW	WW	YW	ADG	MCE	Milk	MWW	Stay	DOC	CW	YG	Marb	BF	REA	API	TI
	15	.5	63	95	.20	10	20	52	13	10.7	26.9	-.15	.28	-.027	.48	132	69

**Dameron First Class**  
**Colburn Primo 5153**  
**Silveiras Saras Dream 1339**  
**CNS Dream On L186**  
**HS Stop And Stare U118L**  
**HHSF Black Glitter**

Stop And Stare is truly a rockstar when it comes to percentage heifers that leave an impression on the show ring. Take a peek at Prime Stare. Typical Primo, she has shag that will make a Monopolys jealous and steer fitters come running. Although she is young, she's ready to make the judges stare. The front ends that Primo stamps his heifers with is spot on. The challenge is on for who will be dragging this one at Jr. Nationals!



## SELLING AN EMBRYO BASKET OF 4:

### 2 IVF Non Sexed Embryos

**B C Lookout 7024 x HS Stop And Stare U118L**

Est. PM EPDs: 12 1.25 60 88 .17 5 17 47 12 11.0  
Carcass: 23.8 -.32 .52 -.05 .79 139 72

### 2 IVF Sexed Heifer Embryos

**TJ Main Event 503B x HS Stop And Stare U118L**

Est. PM EPDs: 12 -.35 82 113 .20 8 22 63 15 11.4  
Carcass: 35.5 -.27 .32 -.05 .76 143 82

PER PACKAGE: Guaranteeing 160 day pregnancy if work is performed by a certified embryologist and 60 day ultrasound paperwork is provided.



## SELLING AN EMBRYO BASKET OF 4:

### 2 IVF Sexed Heifer Embryos

**RSRG SRG Two Step 20Z ET x HS Stop And Stare U118L**

Est. PM EPDs: 9 1.65 55 73 .12 8 16 43 14.2  
Carcass: 15.8 -.29 .18 -.05 .58 125 64

### 2 IVF Embryos

**W/C United 956Y x HS Stop And Stare U118L**

Est. PM EPDs: 10 1.2 77 120 .27 8 15 53 15 10.35  
Carcass: 42.8 -.16 .37 -.02 .75 141 78



## HILB No Stoppin Me E607

Black Polled 1/2 SM 1/2 AN ~ ASA#3299653  
BD: 3/28/17 ~ Tattoo: E607 ~ Adj. BW: 86 ET

EPDs	CE	BW	WW	YW	ADG	MCE	Milk	MWW	Stay	DOC	CW	YG	Marb	BF	REA	API	TI
	12	1.3	60	88	.17	5	17	47	12	11.0	23.8	-.32	.52	-.049	.78	139	72

**O C C Legend 616L**  
**B C Lookout 7024**  
**Gibbet Hill Mignonne E37**  
**CNS Dream On L186**  
**HS Stop And Stare U118L**  
**HHSF Black Glitter**



HILB Stop & Wish D507  
Full Sister

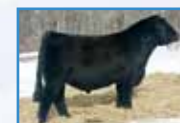
No Stoppin Me is a full sister to HILB Stop & Wish or "Wishes" that was 2016 American Royal Reserve Percentage Female and 2017 NWSS Res Percentage female in the Junior show for Claire Trennepohl. No Stoppin Me was named appropriately, as she resembles a longer fronted Wishes and continues to get better with time. This one would be super fun to pop out of the woodwork next fall as a big heifer! Her better days are truly ahead of her.



B C Lookout 7024  
Embryo Sire



TJ Main Event 503B  
Embryo Sire



RGRS SRG Two Step  
20Z ET  
Embryo Sire



W/C United 956Y  
Embryo Sire





## Elm-Mound Lookout D251

Black Polled 1/2 SM 1/2 AN ~ ASA#3183141  
BD: 1/14/16 ~ Tattoo: D251 ~ Adj. BW: 86 ET

EPDs	CE	BW	WW	YW	ADG	MCE	Milk	MWW	Stay	DOC	CW	YG	Marb	BF	REA	API	TI
	12	1.3	60	88	.17	5	17	47	12	11.0	23.8	-.32	.52	-.049	.78	139	72

B C Lookout 7024

HS Stop And Stare U118L

O C C Legend 616L

Gibbet Hill Mignonne E37

CNS Dream On L186

HHSF Black Glitter



HS Stop And Stare U118L, Dam

I probably shouldn't be letting this powerful female leave the farm. Over the years, her sisters have been Jewels Sale headliners. The number of sale toppers and show winners are too numerous for me to list. I believe this heifer is a true breeding piece. She's bred to Blaze of Glory, and carrying an ultrasound heifer calf.

A.I. Sire: CAJS Blaze Of Glory on 4/6/17 • Heifer • Safe  
Due: 1/13/18

Est. Plan Mating EPDs: 14 -.25 58 79 .13 8 17 46 9 11.4

Carcass: 16.4 -.32 .37 -.04 .71 127 69

Pasture Sire: LHT Mr. Executive 166D on 5/6 to 7/2/17



CAJS Blaze Of Glory  
A.I. Sire



## HSF Liberty D605

Black Polled Purebred ~ ASA#3273671  
BD: 1/7/16 ~ Tattoo: D605 ~ Adj. BW: 92 ET

EPDs	CE	BW	WW	YW	ADG	MCE	Milk	MWW	Stay	DOC	CW	YG	Marb	BF	REA	API	TI
	10	1.1	77	129	.33	7	21	59	7	10.7	48.7	-.36	.03	-.059	1.13	117	77

GLS Integrate Z3

HSF Liberty Bell X004

Mr. NLC Upgrade U8676

GLS Miss BTE W149

SVF Steel Force S701

Triple C Miss Liberty P1

Here's a female with the right parts and pieces to make you money down the road. Only great things can happen when you combine the Liberty and Sheza Beauty cow family and throw in Power Drive, Upgrade and Steel Force. This girl is big bodied, stout, sound, big boned and footed. This will be one of the last Liberty Bell females to sell as she is now deceased. A maternal sibling, HSF Libby A336, was the second high selling female for \$14,000 in this sale in 2013 to Mason Latzke and was the Champion Cow/Calf this summer at the Minnesota State Fair Open Show and Reserve Champion in the 4-H Show. She is in the top 10% for WW and the top 1% for YW. Sells bred to the calving ease bull Wide Range for a January calf.

A.I. Sire: CCR Wide Range 9005A on 4/14/17 • Due: 1/22/18  
Est. Plan Mating EPDs: 11 .25 75 123 .30 10 22 59 12 11.8  
Carcass: 43.7 -.34 .09 -.03 1.26 133 78



HSF Liberty Bell X004  
Dam



HSF Libby A336  
Maternal Sister





**Pedigree for Lots 53 & 54:****Bushs Unbelievable 423****S A V Bismarck 5682****Bushs Blackbird 8708****HS Stop And Stare U118L****CNS Dream On L186****HHSF Black Glitter**

Stare Down and Believe It are both full sisters to the \$60,000 valuation HILB Stare & Believe who was Champion Division 1 female at both the North American and National Western this past year. The mating of Stop & Stare and Bushs Unbelievable is the genetic combination we are most excited about to get into production. They have the right phenotypic look combined with great numbers. 139 API on that Executive Order baby coming for Believe It!



W/C Executive Order  
8543B, A.I. Sire



HILB Stare & Believe, Full Sister

**HILB/SHER Stare Down 730E****Black Polled 1/2 SM 1/2 AN ~ ASA#3302381**

BD: 1/24/17 ~ Tattoo: 730E ~ Adj. BW: 79 ET

EPDs	CE	BW	WW	YW	ADG	MCE	Milk	MWW	Stay	DOC	CW	YG	Marb	BF	REA	API	TI
	14	.0	59	89	.19	9	23	52	15	10.1	23.0	-.29	.44	-.059	.60	144	72

**HILB/BRKC Believe It D16Z****Black Polled 1/2 SM 1/2 AN ~ ASA#3273025**

BD: 3/20/16 ~ Tattoo: D16Z ~ Adj. BW: 84 ET

EPDs	CE	BW	WW	YW	ADG	MCE	Milk	MWW	Stay	DOC	CW	YG	Marb	BF	REA	API	TI
	14	.0	59	89	.19	9	23	52	15	10.1	23.0	-.29	.44	-.059	.60	144	72

A.I. Sire: W/C Executive Order 8543B on 3/27/17

Est. Plan Mating EPDs: 14 -1.65 62 96 .22 9 22 53 11 10.2

Carcass: 24.8 -.33 .39 -.04 .87 139 75







At 1st Sight made her debut as a donor last fall when her first two daughters, Dare 2 Impress and Impress Me, stormed into the Minnesota Beef Expo and were crowned Champion and Reserve Percentage Females, beating the big heifers! Those heifers commanded prices of \$25,000 and \$14,000 later that winter. Full sisters to Impress Me, by Executive Order, blew threw the pen show in Denver and came home with a dark purple banner. This cow family is on fire and At 1st Sight isn't going to let herself be forgotten. Love Struck is a neat made heifer by Profit. Fresh genetics at its finest! She will be fun to show in that February class. 1st Executive and Joyful Love are the first bred females to sell out of At 1st Sight. We are pumped to calve out our first set of Executive Order daughters and opening that opportunity to you with At 1st Sight's natural calf 1st Executive. She is carrying a HEIFER baby by the National Champion Bull, Blaze of Glory. Can you image how cool that little one will be? Especially if she is a baldy! Joyful Love is the full sister to the MN Beef Expo Champion Percentage Female, Dare 2 Impress, chosen by White Wing Simmentals in the Jewels of the Northland Sale last year. This bred has been a powerhouse her whole life and think the Executive Order baby she is carrying could be really really cool!



### HILB/JLC Love Struck E128B

Black DbL. Polled 3/4 SM 1/4 AN ~ ASA#3307319  
BD: 2/20/17 ~ Tattoo: E128B ~ Adj. BW: 81 ET

EPDs	CE	BW	WW	YW	ADG	MCE	Milk	MWW	Stay	DOC	CW	YG	Marb	BF	REA	API	TI
	7	3.3	60	88	.17	6	22	52	14	10.3	26.9	-.15	.26	-.015	.57	117	62

Profit

HILB/SHER At 1st Sight

WS Pilgrim H182U

WAGR Panarama 204Z

Dameron First Impression

HS Stop And Stare U118L



HILB/SHER At 1st Sight  
Dam



HILB/JLC Dare 2 Impress  
Maternal Sister



CAJS Blaze Of Glory  
Lot 56 A.I. Sire



### HILB/JLC 1st Executive D428B

Black DbL. Polled 5/8 SM 3/8 AN ~ ASA#3272941  
BD: 2/8/16 ~ Tattoo: D428B ~ Adj. BW: 87

EPDs	CE	BW	WW	YW	ADG	MCE	Milk	MWW	Stay	DOC	CW	YG	Marb	BF	REA	API	TI
	12	-.5	64	101	.23	8	22	54	11	10.8	29.5	-.23	.33	-.023	.76	133	73

W/C Executive Order 8543B

HILB/SHER At 1st Sight

W/C United 956Y

Miss Werning KP 8543U

Dameron First Impression

HS Stop And Stare U118L

A.I. Sire: CAJS Blaze Of Glory on 5/9/17 • Heifer • Due: 2/15/18  
Est. Plan Mating EPDs: 14 -1.15 60 86 .16 9 19 49 8 11.3  
Carcass: 19.25 -.27 .28 -.03 .70 133 75







57



**Pedigree for Lots 57 & 57A:**  
 S A V Brilliance 8077  
 PVF Insight 0129  
 PVF Missie 790  
 CNS Dream On L186  
 HS Stop And Stare U118L  
 HHSF Black Glitter

W/C Executive Order  
 8543B, A.I. Sire



57A



### HILB/SHER Stop & See 648D

**Black Polled 1/2 SM 1/2 AN** ~ ASA#3162056  
 BD: 2/11/16 ~ Tattoo: 648D ~ Adj. BW: 93 ET

EPDs	CE	BW	WW	YW	ADG	MCE	Milk	MWW	Stay	DOC	CW	YG	Marb	BF	REA	API	TI
	14	1.0	68	108	.25	8	30	63	14	11.8	35.5	-.37	.36	-.032	1.23	142	76

A.I. Sire: W/C Executive Order 8543B on 6/12/17 • Safe • Due: 3/21/18

Est. Plan Mating EPDs: 14 -.15 66 105 .25 8 26 59 11 11.05

Carcass: 31.05 -.37 .35 -.03 1.19 138 77

Pasture Sire: W/C Executive Order 8543B on 6/30 to 7/16/17



58



### HILB See The Vision D14

**Black Polled 1/2 SM 1/2 AN** ~ ASA#3272940  
 BD: 5/2/16 ~ Tattoo: D14 ~ Adj. BW: 83 ET

EPDs	CE	BW	WW	YW	ADG	MCE	Milk	MWW	Stay	DOC	CW	YG	Marb	BF	REA	API	TI
	14	1.0	68	108	.25	8	30	63	14	11.8	35.5	-.37	.36	-.032	1.23	142	76

A.I. Sire: ES Capital Gains on 7/10 • Safe • Due: 4/18/18

Est. Plan Mating EPDs: 12 .15 71 115 .27 8 24 60 11 10.4

Carcass: 38.6 -.13 .46 .02 .93 142 80

Pasture Sire: ES Capital Gains on 7/10 to 8/12/17



### HILB/JLC Joyful Love D5A

**Black Dbl. Polled 1/2 SM 1/2 AN** ~ ASA#3301115  
 BD: 2/13/16 ~ Tattoo: D5A ~ Adj. BW: 81 ET

EPDs	CE	BW	WW	YW	ADG	MCE	Milk	MWW	Stay	DOC	CW	YG	Marb	BF	REA	API	TI
	7	.3	52	78	.16	7	23	49	8	11.4	17.1	-.14	.18	-.008	.46	102	59

W/C No Remorse 763Y

HILB/SHER At 1st Sight

Yardley High Regard W242

DW Susanna 763T

Dameron First Impression

HS Stop And Stare U118L

A.I. Sire: W/C Executive Order 8543B on 4/22/17  
 Due: 1/29/18

Est. Plan Mating EPDs:

11 -.15 58 90 .20 8 23 52 7 10.85

Carcass: 21.85 -.25 .26 -.02 .80 118 68





## HS Sweet Divinity D766W

Black Polled Purebred - ASA#3307340

BD: 3/7/16 - Tattoo: D766W - Adj. BW: 89 ET

EPDs	CE	BW	WW	YW	ADG	MCE	Milk	MWW	Stay	DOC	CW	YG	Marb	BF	REA	API	TI
	13	.8	61	86	.16	10	17	48	10	9.3	22.2	-.30	.10	-.058	.62	122	68

SVF/NJC Built Right N48

CNS Dream On L186

HS Sweet Gem X141N

NJC Ebony Antoinette

HTP/SVF Duracell T52

KenCo Miley Cottontail



HS Sweet Gem X141N  
Dam

Another beautifully made Built Right daughter that is going to make a tremendous cow. She's extremely long bodied, sound on her feet and legs and smooth in her joints. Gem has done a tremendous job for us producing very functional females that have gone on to be big producers themselves. A Gem granddaughter was crowned the Reserve Supreme Breeding Female at the Kansas State Fair this past year!

A.I. Sire: W/C Executive Order 8543B on 5/2/17 • Due: 2/8/18

Est. Plan Mating EPDs: 14 -1.25 63 95 .20 9 20 51 8 9.8

Carcass: 24.4 -.33 .22 -.04 .88 132 75



## HS Sweet Diva D6U

Black Polled 3/4 SM 1/4 AN - ASA#3251203

BD: 3/6/16 - Tattoo: D6U - Adj. BW: 73 ET

EPDs	CE	BW	WW	YW	ADG	MCE	Milk	MWW	Stay	DOC	CW	YG	Marb	BF	REA	API	TI
	8	.2	55	78	.14	9	19	46	4	10.8	16.4	-.24	.10	-.014	.72	92	59

Yardley High Regard W242

W/C No Remorse 763Y

DW Susanna 763T

HTP/SVF Duracell T52

HS Sweet Gem X141N

KenCo Miley Cottontail

Here is a real attractive Gem x No Remorse heifer that has a super feminine, eye appealing look to her. She's smooth made, bold sprung and exceptional on her feet and legs. A full sister to Diva was a Reserve Division winner for Brandon Luebke this past summer at the Iowa State Fair.

A.I. Sire: W/C Executive Order 8543B on 4/24/17 • Due: 1/31/18

Est. Plan Mating EPDs: 11 -1.55 59 90 .19 9 21 50 5 10.55

Carcass: 21.5 -.30 .22 -.02 .93 113 68



W/C Executive Order  
8543B, A.I. Sire



### Selling 3 IVF Sexed Heifer Embryos

Mr. CCF 20-20 x HS Sweet Gem X141N

Est. PM EPDs: 12 1.55 70 101 .20 10 16 50 9 11.1  
Carcass: 31.85 -.34 .11 -.05 .94 121 73

Guaranteeing 160 day pregnancy if work is performed by a certified embryologist and 60 day ultrasound paperwork is provided.



### Selling 3 IVF Sexed Heifer Embryos

W/C Fully Loaded 90D x HS Sweet Gem X141N

Est. PM EPDs: 12 .1 58 79 .13 11 18 48 10 10.5  
Carcass: 16.6 -.48 .06 -.06 1.12 119 67

Guaranteeing 160 day pregnancy if work is performed by a certified embryologist and 60 day ultrasound paperwork is provided.



W/C Fully Loaded 90D  
Embryo Sire







## 61 HS/BWL/SS Sweet Delight D141X

**Black Polled Purebred** ~ ASA#3244855  
BD: 12/9/16 ~ Tattoo: D141X ~ Adj. BW: 88

EPDs	CE	BW	WW	YW	ADG	MCE	Milk	MWW	Stay	DOC
12	.1	69	103	.22	10	18	52	8	10.2	

CW	YG	Marb	BF	REA	API	TI
31.3	-.32	.24	-.029	1.03	129	77

W/C United 956Y  
W/C Executive Order 8543B  
Miss Werning KP 8543U  
HTP/SVF Duracell T52  
HS Sweet Gem X141N  
KenCo Miley Cottontail

If you're looking for a heifer for a first time showman or one that's lacking some confidence, this one just might be the perfect fit. Jazlynn broke this one and showed her this past summer and she is an absolute sweetheart. To top it off, she's got a pretty nice set of EPDs with an API and TI in the top 35 and 15% of the breed respectively. Plus being a December, she falls in that normally smaller winter calf division.



## 63 HILB Moonlight Magic E27M

**Homo. Black Dbl. Polled 1/2 SM 1/2 AN** ~ ASA#3299555  
BD: 3/5/17 ~ Tattoo: E27M ~ Adj. BW: 70 ET

EPDs	CE	BW	WW	YW	ADG	MCE	Milk	MWW	Stay	DOC
8	.9	55	83	.18	2	15	43	7	10.5	

CW	YG	Marb	BF	REA	API	TI
21.0	-.35	.41	-.053	.81	108	63

O C C Legend 616L  
B C Lookout 7024  
Gibbet Hill Mignonne E37  
GLS New Direction X184  
HILB Moonlight Crush B43  
AJE Jewels Halo

Moonlight Magic is the full sister to the NAILE class winning, \$30,000 Moonlit Gaze purchased by Campbell Cattle at the North American last year. Magic has been a sweetheart since birth and is the first embryo baby out of Moonlight Crush or more affectionately known as "Mavericka." We can easily say the first go round to Lookout was not a fluke and Magic is equally as cool as her sister. Since the genetics are holding true, we cannot wait to see what else comes from this stellar young donor. Get in on the ground floor of some up and coming genetics!



HILB Moonlight Crush  
B43, Dam



HILB Moonlit Gaze  
Full Sister



## 62 HS Elegant Rose E95A

**Black Dbl. Polled Purebred** ~ ASA#3307344  
BD: 3/28/17 ~ Tattoo: E95A ~ Adj. BW: 69 ET

EPDs	CE	BW	WW	YW	ADG	MCE	Milk	MWW	Stay	DOC
8	2.4	73	109	.22	6	15	51	2	10.9	

CW	YG	Marb	BF	REA	API	TI
37.7	-.32	.04	-.064	.82	91	71



Heads Up 20X ET  
LLSF Uprising Z925  
LLSF Untouchable U925  
SVF Steel Force S701  
HS Sweet Elegance A5243  
HS Sweet Gem X141N

Super cool fronted, sharp made purebred Simmy that has a lot of neat pieces to her. Her dam is one of our favorite Gem daughters to date. A maternal brother, HS Hot Domino, by Executive Order was recently named the Grand Champion Simmental bull at the 2017 MN State Fair. While a full sib sister was a Reserve Division winner at the 2017 Indiana State Fair and 2017 Eastern Regionals for the Wicker family of Indiana. There's winning in the blood with this one!



HS Sweet Elegance  
A5243, Dam



HILB Oracle C033R  
Embryo Sire



## Selling 3 IVF Sexed Heifer Embryos HILB Oracle C033R x HS Sweet Elegance A5243

Est. PM EPDs: 10 1.7 64 90 .16 7 18 50 5 10.9  
Carcass: 25.7 -.35 .02 -.06 .81 102 66

Guaranteeing 160 day pregnancy if work is performed by a certified embryologist and 60 day ultrasound paperwork is provided.



# Hannah Montana Family



**HSF Lela D635**

**Black Polled Purebred** ~ ASA#3307554  
BD: 2/16/16 ~ Tattoo: D635 ~ Adj. BW: 97 ET



W/C United 956Y  
W/C Executive Order 8543B  
Miss Werning KP 8543U  
SVF/NJC Built Right N48  
HSF Hannah Montana T771  
SF Ms. Destina K291

EPDs	CE	BW	WW	YW	ADG	MCE	Milk	MWW	Stay	DOC
	15	-2.5	53	79	.16	10	22	49	12	8.4
	CW	YG	Marb	BF	REA	API	TI			
	13.4	-.34	.29	-.045	.75	142	73			

Hannah Montana has proven time and time again why she is one of our top donor females with her consistency year after year. Here are three daughters to prove it. D635 will knock your socks off with her moderate frame, big bodied, huge middles, smooth shouldered, big boned, big footed, super sound, awesome front, picture perfect future donor female.. need I say more. C598 is an outstanding fall half blood female that is long bodied, stout made, big topped, good footed, sound and definitely donor quality. D608 is a real moderate made female that resembles the Angus half of her pedigree a little more but is put together really good. All three sell bred to the calving ease bull 20-20 for early January calves. Our 20-20 calves are phenomenal with small birth weights that really kick it into gear from there. **We reserve the right to a future flush with a minimum of six (6) transferable embryos to be done at the seller's expense and the buyer's convenience on both D635 and C598.**



Mr. CCF 20-20  
A.I. Sire

A.I. Sire: Mr. CCF 20-20 on 3/30/17 • Due: 1/7/17  
Est. Plan Mating EPDs: 13 -.05 63 94 .19 9 19 51 10 10.25  
Carcass: 25.7 -.35 .19 -.06 .86 131 73



HSF Hannah Montana T771, Dam



**HSF Joseline C598**

Black Polled 1/2 SM 1/2 AN ~ ASA#3310104  
BD: 10/14/15 ~ Tattoo: C598 ~ Adj. BW: 79 ET

EPDs	CE	BW	WW	YW	ADG	MCE	Milk	MWW	Stay	DOC
	13	-.7	50	74	.15	6	18	44	10	8.6
	CW	YG	Marb	BF	REA	API	TI			
	12.9	-.32	.55	-.054	.60	138	70			

B C Lookout 7024

O C C Legend 616L

HSF Hannah Montana T771

Gibbet Hill Mignonne E37  
SVF/NJC Built Right N48  
SF Ms. Destina K291

A.I. Sire: Mr. CCF 20-20 on 4/6/17 • Due: 1/14/17  
Est. Plan Mating EPDs: 13 .85 62 91 .19 7 18 48 9 10.35  
Carcass: 25.45 -.34 .32 -.06 .78 125 69

View sale live and bid online at:

**LiveAuctions.TV***Hecksel*

65

**HSF Henrietta D608**

Black Polled 1/2 SM 1/2 AN ~ ASA#3273672  
BD: 1/8/16 ~ Tattoo: D608 ~ Adj. BW: 83

EPDs	CE	BW	WW	YW	ADG	MCE	Milk	MWW	Stay	DOC
	12	-.8	59	87	.17	9	20	50	10	*
	CW	YG	Marb	BF	REA	API	TI			
	20.2	-.28	.47	-.075	.40	136	73			

BSF Opportunist Z5

BSAR Opportunity 9114

HSF Hannah Montana T771

BSF Princess El Cap W2  
SVF/NJC Built Right N48  
SF Ms. Destina K291

A.I. Sire: Mr. CCF 20-20 on 4/10/17 • Due: 1/18/17  
Est. Plan Mating EPDs: 12 .8 66 98 .20 9 18 52 9 \*  
Carcass: 29.1 -.32 .28 -.07 .68 124 71



Mr. CCF 20-20  
A.I. Sire

*Hecksel*

66





## JRB/HSF Kayden D245

**Black Dbl. Polled 3/4 SM 1/4 AN**

ASA#3167744 ~ BD: 2/5/16

Tattoo: D245 ~ Adj. BW: 65 ET

Remington Lock N Load 54U  
W/C Lock Down 206Z

G C F Miss New Level R206

BMR Explorer

HSF Hannah W986

HSF Hannah Montana T771

EPDs	CE	BW	WW	YW	ADG	MCE	Milk	MWW	Stay	DOC
	18	-2.3	53	77	.15	8	10	36	12	6.6
	CW	YG	Marb	BF	REA	API	TI			
	12.1	-.21	.28	-.036	.41	136	66			

Here's a nice pair of maternal siblings that will make outstanding females for years to come. The Lock Down daughter is the moderate frame, big bodied, sound structured, cool fronted heifer. While the United daughter is a little bigger framed female that is very complete. A full sibling to the United heifer, JRB/HSF Kagney C986, was one of the high selling females at the 2017 Minnesota Simmental State Sale to Chambers Cattle, IA, for \$4,900. Another maternal sibling, JRB/HSF Jenessa E125 was the high seller in the MPJ online sale this fall for \$10,500. The Hannah W986 daughters have been maternal money making machines. Both sell bred to two super calving ease bulls.

A.I. Sire: CAJS Blaze Of Glory on 4/17/17

Due: 1/25/17

Est. Plan Mating EPDs:

17 -2.05 55 74 .12 9 13 40 9 9.2

Carcass: 10.55 -.26 .25 -.04 .52 135 71



JRB/HSF Jenessa E125  
Maternal Sister



CLRS After Shock 604A  
A.I. Sire



JRB/HSF Kagney C986  
Maternal Sister



## JRB/HSF Romi D162

**Black Dbl. Polled 3/4 SM 1/4 AN ~ ASA#3310102**

BD: 1/23/16 ~ Tattoo: D162 ~ Adj. BW: 78 ET

EPDs	CE	BW	WW	YW	ADG	MCE	Milk	MWW	Stay	DOC							
	11	-.8	66	101	.22	7	12	45	11	6.3	CW	YG	Marb	BF	REA	API	TI
											28.8	-.14	.33	-.018	.54	132	72

TNT Tuition U238

W/C United 956Y

Miss Werning 956W

BMR Explorer

HSF Hannah W986

HSF Hannah Montana T771

A.I. Sire: CLRS After Shock 604A on 6/8/17 • Due: 3/18/17

Est. Plan Mating EPDs: 11 -.15 67 105 .24 9 18 52 15 9.6

Carcass: 32.3 -.20 .29 -.03 .65 147 78



CAJS Blaze Of Glory  
A.I. Sire



HSF Hannah W986  
Dam



**HSF/HILB Reba D601**

**Black Polled 1/2 SM 1/2 AN** ~ ASA#3273669  
 BD: 1/3/16 ~ Tattoo: D601 ~ Adj. BW: 91

BSAR Opportunity 9114  
 BSF Opportunist Z5  
 BSF Princess El Cap W2  
 SVF/NJC Built Right N48  
 JF Reba 6118S  
 JF Miss Reba 050K

EPDs	CE	BW	WW	YW	ADG	MCE	Milk	MWW	Stay	DOC
	11	.6	66	100	.22	8	21	54	8	*
	CW	YG	Marb	BF	REA	API	TI			
	30.4	-.28	.40	-.075	.54	125	74			

If you're looking for a three dimensional brood cow donor prospect than look no further. The sheer mass, body and bone this girl possesses is astonishing on top of her elephant foot and sound structure. The Reba cow family needs no introduction for their high quality progeny and longevity they transmit. Her sire, BSF Opportunist, was a two time Reserve Champion Angus bull at the National Western Stock Show. Sells bred to the calving ease bull Wide Range for a January calf. **We reserve the right to a future flush with a minimum of six (6) transferable embryos to be done at the seller's expense and the buyer's convenience.**



JF Reba 6118S  
Dam

View sale live and bid online at:

**LiveAuctions.TV**



CCR Wide Range 9005A  
A.I. Sire

A.I. Sire: CCR Wide Range 9005A on 4/5/17 • Due: 1/13/17  
 Est. Plan Mating EPDs: 11 .0 70 109 .25 11 22 57 12 \*  
 Carcass: 34.55 -.30 .28 -.04 .96 133 74





## HILB/MPC Miss Maddie D86B

**Black Baldy Dbl. Polled 5/8 SM 3/8 AN** ~ ASA#3273885  
BD: 2/9/16 ~ Tattoo: D86B ~ Adj. BW: 79

EPDs	CE	BW	WW	YW	ADG	MCE	Milk	MWW	Stay	DOC
	7	.6	50	79	.18	6	19	44	4	11.4
	CW	YG	Marb	BF	REA	API	TI			
	18.2	-.30	.12	-.030	.80	92	57			

W/C No Remorse 763Y

Yardley High Regard W242

DW Susanna 763T

Milliron/GLS Blackout B86

Remington Lock N Load 54U

Milliron Blackout X0040

Maddie is the first heifer out of Milliron/GLS Blackout, more affectionately known as "Becky" around our place. We found Becky at the Bullseye Bonanza Sale and after a quick chat with our good friend Matt Pearson, decided we could do some cool things with this Lock and Load daughter. The mating to No Remorse was nothing to regret and Maddie has hit the gas and never looked back. Her cool baldy face is like sprinkles on ice cream as her neck comes out high and reaches for the sky! We think she is going to be a beautiful cow, just like her mother and do an great job with that Executive Order baby!

A.I. Sire: W/C Executive Order 8543B on 5/20/17 • Due: 2/26/18  
Est. Plan Mating EPDs: 11 -1.35 57 91 .21 7 21 49 5 10.85  
Carcass: 22.4 -.33 .23 -.03 .97 113 67



## Selling 3 IVF Sexed Heifer Embryos

**CDI Innovator 325D x Milliron/GLS Blackout B86**

Est. PM EPDs: 11 1.4 76 120 .28 7 21 59 9 11.75  
Carcass: 43.25 -.28 .35 -.04 .94 129 78

Guaranteeing 1 60 day pregnancy if work is performed by a certified embryologist and 60 day ultrasound paperwork is provided.



## Elm-Mound New Direct D244

**Black Polled Purebred** ~ ASA#3183139  
BD: 1/1/16 ~ Tattoo: D244 ~ Adj. BW: 81

EPDs	CE	BW	WW	YW	ADG	MCE	Milk	MWW	Stay	DOC
	5	1.1	57	92	.22	5	17	45	9	13.3
	CW	YG	Marb	BF	REA	API	TI			
	26.4	-.37	-.08	-.058	.91	100	60			

HSF Better Than Ever  
GLS New Direction X184  
GLS N6  
Remington Lock N Load 54U  
Elm-Mound Lock N Load B208  
JM Miss Dana N31

Solid black, long bodied New Direction daughter that is backed by the H25 cow family. Her granddam is the Dana donor for Windy Ridge Simmentals in Nebraska. This female has a little different pedigree that offers endless mating opportunities. She sells bred to Executive Order and due in mid-January with an ultrasound heifer calf.

A.I. Sire: W/C Executive Order 8543B on 4/6/17 • Heifer • Due: 1/13/18  
Est. Plan Mating EPDs: 10 -1.1 60 97 .23 7 20 50 8 11.8  
Carcass: 26.5 -.37 .13 -.04 1.03 121 72  
Pasture Sire: LHT Mr. Executive 166D on 5/6 to 7/2/17



Milliron/GLS Blackout  
B86, Dam



CDI Innovator 325D  
Embryo Sire



JM Miss Dana N31  
Grandam



W/C Executive Order  
8543B, A.I. Sire



Learns Priscilla  
Lot 73 DamHSF Victoria P30  
Lot 74 DamChampion PB Simmental  
Female 2017 MN Beef Expo  
Same Cow FamilyCCR Wide Range 9005A  
A.I. Sire**HSF/Learns Paige D617**

**Black Dbl. Polled Purebred** ~ ASA#3310100  
BD: 1/28/16 ~ Tattoo: D617 ~ Adj. BW: 87

EPDs	CE	BW	WW	YW	ADG	MCE	Milk	MWW	Stay	DOC	CW	YG	Marb	BF	REA	API	TI
	11	1.6	57	76	.12	6	19	48	12	11.4	17.1	-.33	.174	-.045	.76	124	66

**CNS Dream On L186**  
**WLE Uno Mas X549**  
**Shawnee Miss 770P**  
**PVF-BF BF26 Black Joker**  
**Learns Priscilla**  
**Learns Sheza Odette**

Here is a nice Uno Mas daughter that will make a great cow. Her dam, Priscilla, is a full sibling in blood to the dam of Steel Force. A maternal sibling, HSF/Learns Bree C510, was the Reserve Champion Cow/Calf Pair at the MN State Fair Open Show for Rockin H Ranch. This same cow family produced the Grand Champion Simmental Female and 5th Overall female at the 2017 MN Beef Expo for Trinity Lindner. Due early March to Wide Range.

A.I. Sire: CCR Wide Range 9005A on 5/22/17 • Due 3/1/17  
Est. Plan Mating EPDs: 12 .5 66 97 .20 9 21 53 15 12.15  
Carcass: 27.9 -.33 .16 -.02 1.07 136 73

**Elm-Mound New Direct D249**

**Black Blaze Dbl. Polled Purebred** ~ ASA#3183156  
BD: 1/10/16 ~ Tattoo: D249 ~ Adj. BW: 82

EPDs	CE	BW	WW	YW	ADG	MCE	Milk	MWW	Stay	DOC	CW	YG	Marb	BF	REA	API	TI
	5	1.8	57	84	.17	4	15	43	9	14.1	22.6	-.40	.19	-.059	.84	114	66

**GLS New Direction X184****HSF Better Than Ever**  
**GLS N6****Elm-Mound Upgrade B204****Mr. NLC Upgrade U8676**  
**Elm-Mound Lucky Ace X133**

A.I. Sire: W/C Executive Order 8543B on 4/9/17 • Heifer • Safe • Due: 1/16/18  
Est. Plan Mating EPDs: 10 -.75 61 94 .21 7 19 49 8 12.2  
Carcass: 24.6 -.38 .27 -.04 1.04 129 74  
Pasture Sire: LHT Mr. Executive 166D on 5/6 to 7/2/17

**HSF Janet D622**

**Black Dbl. Polled Purebred** ~ ASA#3310101  
BD: 1/29/16 ~ Tattoo: D622 ~ Adj. BW: 81 ET

EPDs	CE	BW	WW	YW	ADG	MCE	Milk	MWW	Stay	DOC	CW	YG	Marb	BF	REA	API	TI
	11	2.0	60	87	.17	4	24	53	14	7.2	24.6	-.36	.30	-.042	.97	136	72

**MCM Top Grade 018X**  
**LRS Turning Point 3117A**  
**LRS Ms. Dakota 559R**  
**Nichols Blk Destiny D12**  
**HSF Victoria P30**  
**BTS 91X Big Sky F632**

Here is a great cow prospect that has the ability to make you money for years to come. Her donor dam, Victoria, is going on 14 years and still going strong, bred up to calve early this coming year and still looks great, lots of longevity bred in here. A daughter of the deceased Turning Point bull, whose semen is hard to find. Sells bred to the calving ease bull Wide Range for a March calf.

A.I. Sire: CCR Wide Range 9005A on 5/27/17 • Due 3/6/17  
Est. Plan Mating EPDs: 12 .7 67 102 .22 8 23 56 15 10.05  
Carcass: 31.65 -.34 .23 -.02 1.18 142 76

W/C Executive Order  
8543B, A.I. Sire

This black blaze New Direction daughter is well balanced and deep bodied. Her roots trace back to the Hilbrands program, being a great-granddaughter of their Hope donor. I feel she has the makings of a very productive cow. You don't have long to wait, she's due in mid-January to Executive Order, with an ultrasound heifer calf.





W/C Executive Order  
8543B, A.I. Sire



GLS New Direction X184  
A.I. Sire



## Elm-Mound Uprising D261

**Black Baldy Face DbL. Polled Purebred** ~ ASA#3183154  
BD: 2/24/16 ~ Tattoo: D261 ~ Adj. BW: 89

EPDs	CE	BW	WW	YW	ADG	MCE	Milk	MWW	Stay	DOC	CW	YG	Marb	BF	REA	API	TI
	3	3.7	71	110	.24	5	19	54	6	15.0	40.7	-.26	.01	-.067	.67	98	67

**Heads Up 20X ET**  
**LLSF Uprising Z925**  
**LLSF Untouchable U925**  
**Flying B Cut Above**  
**Elm-Mound Fat Butt Z175**  
**JM Miss Dana N31**

This baldy is one of my personal favorites. I didn't plan to sell this one, but I was short on bred for the Jewels sale and had to offer my own replacement heifers. She's well balanced, deep ribbed, and has an easy going disposition. Her granddam is a lead donor for Windy Ridge Simmentals. She is due in early February to Executive Order.

A.I. Sire: W/C Executive Order 8543B on 4/24/17 • Safe  
Est. Plan Mating EPDs: 9 .2 68 106 .24 7 21 54 7 12.65  
Carcass: 33.65 -.31 .18 -.04 .91 120 75  
Pasture Sire: LHT Mr. Executive 166D on 5/6 to 7/2/17



## Elm-Mound OA D266

**Black DbL. Polled Purebred** ~ ASA#3183164  
BD: 3/15/16 ~ Tattoo: D266 ~ Adj. BW: 95

EPDs	CE	BW	WW	YW	ADG	MCE	Milk	MWW	Stay	DOC	CW	YG	Marb	BF	REA	API	TI
	6	4.6	66	88	.13	10	21	55	14	10.2	28.2	-.25	.04	-.056	.57	112	64

**Flying B Cut Above**  
**AJE/HS/MBCC Over Above**  
**JF Ebony's Joy 479P**  
**BH Queens Man 921J**  
**Kappes Lady Queen L213**  
**BDV B25**

Here's a heifer with a little more frame and stretch. Her sire, Over Above, is a son of Hilbrands' Hope donor. His daughters develop into really nice cows. Her dam was a very productive cow that came out of the Kappes program. If you like cows that are fertile, wean a big calf and do it for many years, this heifer is for you. She's due in early January to New Direction, carrying an ultrasound bull calf.

A.I. Sire: GLS New Direction X184 on 3/29/17 • Bull  
Est. Plan Mating EPDs: 5 2.5 56 78 .14 5 17 47 12 10.6  
Carcass: 20.1 -.32 -.01 -.06 .67 104 59  
Pasture Sire: LHT Mr. Executive 166D on 5/6 to 7/2/17



## Elm-Mound Uno Mas D255

**Black DbL. Polled Purebred** ~ ASA#3183188  
BD: 1/22/16 ~ Tattoo: D255 ~ Adj. BW: 81

EPDs	CE	BW	WW	YW	ADG	MCE	Milk	MWW	Stay	DOC	CW	YG	Marb	BF	REA	API	TI
	12	.9	60	80	.12	6	15	48	10	12.1	18.2	-.28	.38	-.039	.68	135	73

**WLE Uno Mas X549**  
**CRSS Chyna**  
**CNS Dream On L186**  
**Shawnee Miss 770P**  
**W/C Wide Track 694Y**  
**PRS Chyna Dew T7057**

A.I. Sire: W/C Executive Order 8543B on 5/13/17 • Heifer  
Est. Plan Mating EPDs: 14 -1.2 62 91 .18 8 19 50 9 11.2  
Carcass: 22.4 -.32 .36 -.03 .91 139 78  
Pasture Sire: LHT Mr. Executive 166D on 5/6 to 7/2/17

This Uno Mas daughter is from the Blk Chyna cow family. Her dam was my choice of the bred heifers on Sloup's New Direction Sale a couple years ago. My bred heifers were still on pasture in early October, so she was still a little green for pictures. Bred to Executive Order, and due in February with an ultrasound heifer calf.



# Selling Many Daughters of Executive Order...



**SEMEN:**  
\$100/unit  
under 10 units  
\$85/unit  
10-24 units  
\$75/unit  
over 25 units

## W/C Executive Order 8543B

Heterozygous Black Homozygous Polled 3/4 SM 1/4 AN

ASA#2900283 ~ BD: 2/10/14 ~ Tattoo: 8543B

EPDs	CE	BW	WW	YW	ADG	MCE	Milk	MWW	Stay	DOC	CW	YG	Marb	BF	REA	API	TI
	15	-3.3	64	103	0.24	9	22	54	7	10.3	26.6	-.36	.34	-.022	1.14	134	78

TNT Tuition U23B  
W/C United 956Y  
Miss Werning 956W  
WAGR Dream Catcher  
Miss Werning KP 8543U  
Miss Werning 534R



Big things are ahead as we gear up to calve out EO's first set of daughters. Still the go to calving ease and growth answer with the bonus of hanging some banners on the side! Contact us today for semen for fall flushes!



